

LeonR&Do testbed: A scalable IoT platform for facility automation and energy control

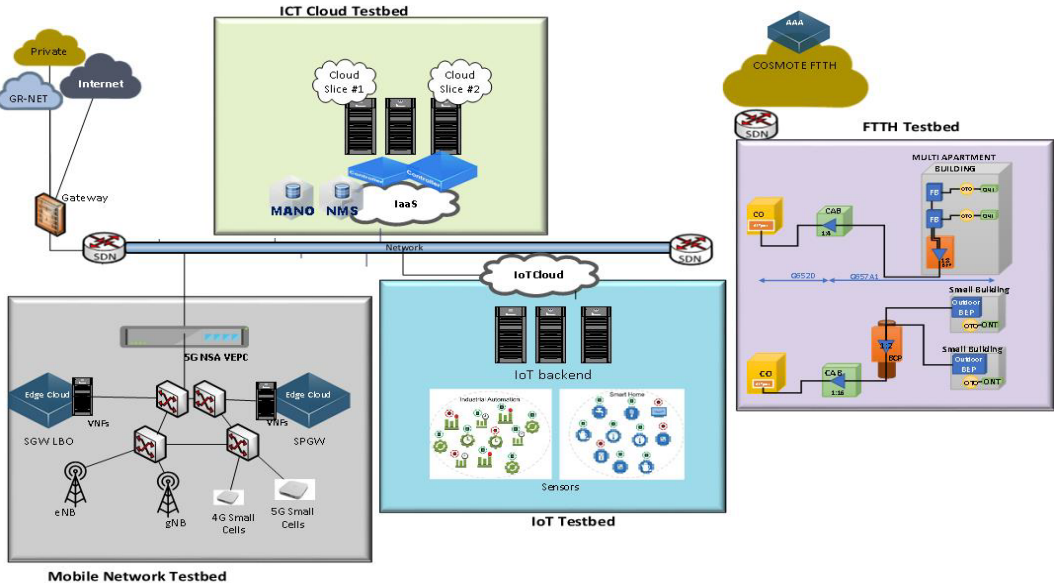
Dr. Konstantinos Filis

Senior Researcher

COSMOTE - Mobile Communications SA

cfilis@cosmote.gr

23 June 2022



Four (4) interrelated Domains

- **ICT Cloud**
hosting Ubuntu, Linux & Centos OS VMs
- **4G/5G NSA Testbed**
gNB/eNB, MEC & core network nodes
- **IoT Platform**
e2e solution developed in-house
- **FTTH Testbed**
multi-apartment building, small buildings simulations

Interconnected with Research Institutes/Centers

- NCSR DEMOKRITOS (and other academic institutions) over 1G GRNET
- NTUA over dark fiber (10G)



The LeonR&Do IoT Platform General Overview

The LeonR&Do IoT platform is a flexible, scalable and secure e2e solution - *developed from scratch*- that can integrate **any sensor** (commercial or custom) and **any technology**, supported by a common backend/cloud infrastructure

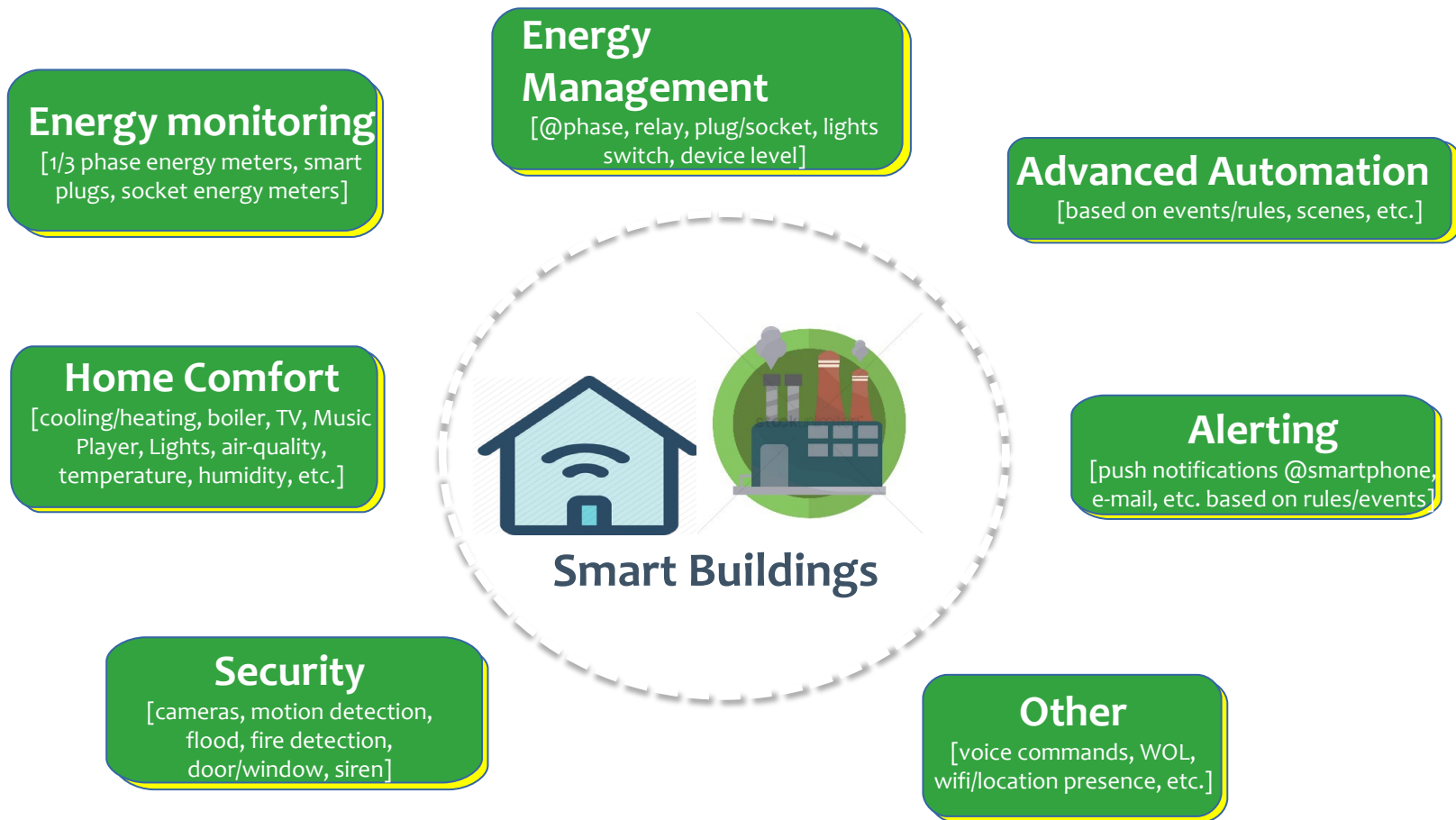
The LeonR&Do IoT testbed is accessible from anywhere.

Any sensor can be integrated (through a common API), while data monitoring/visualization, alerting, data retrieval, etc. services are available.

- **Currently Utilized in INTERCONNECT, AEOLUS, LIFE SAFE-CROSSING, Int5Gent, and 5G-COMplete EU Projects and @Telco Sites**
- **Continuous Expansions (@sensor, @GW, @backend level)**



The LeonR&Do IoT Platform Aim: Smart Buildings





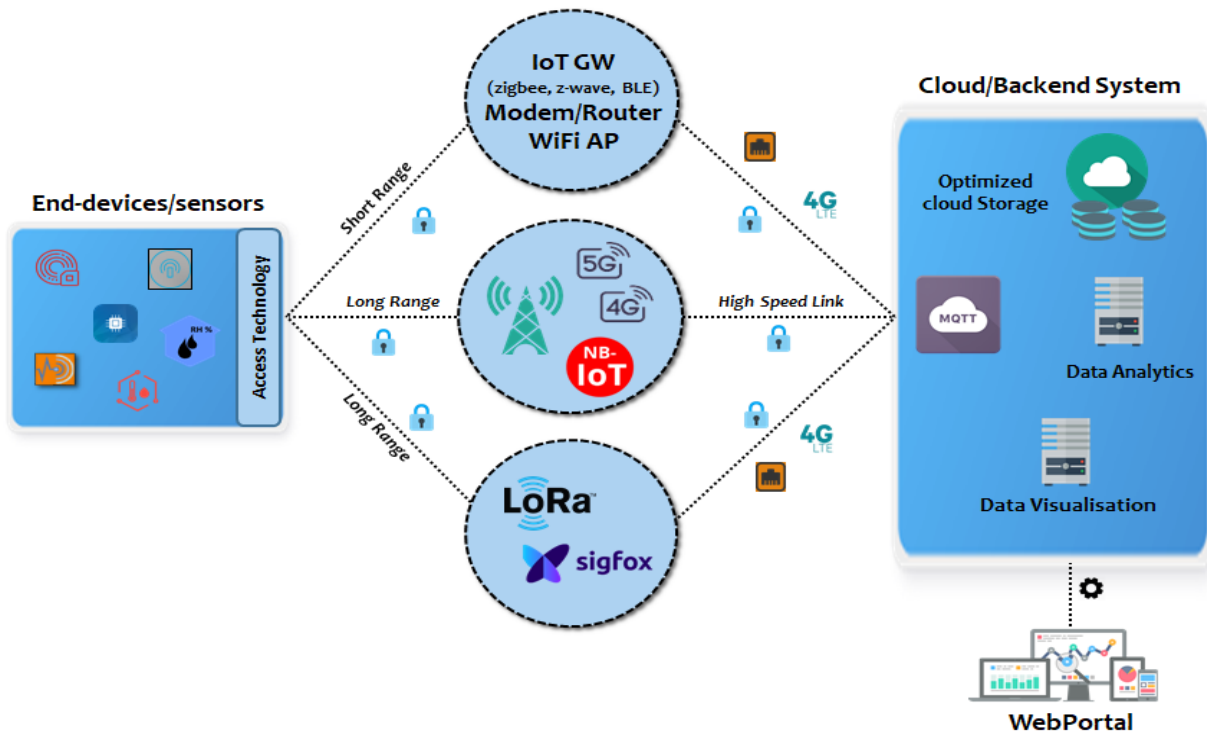
LeonR&Do IoT Platform HW/SW

Custom and commercial end-devices/sensors such as, power/energy-related (relays, power meters, smart plugs, etc.), air-quality, temperature, humidity, pressure, activity/motion, luminance, smoke/fire, etc.

IoT hubs/gateways supporting multiple access technologies/protocols incl. WiFi, z-wave, zigbee, BLE, LoRaWAN, 2G/3G/4G/4G+, NB-IoT.

Common backend for data storage, processing and visualization (MQTT, InfluxDB, Grafana, Kapacitor)

Docker deployments and remote configuration device management.





SENSORS: Energy Monitoring/Management

Wireless
energy
meters



Wireless
sockets /
plugs



Wireless
energy
switches

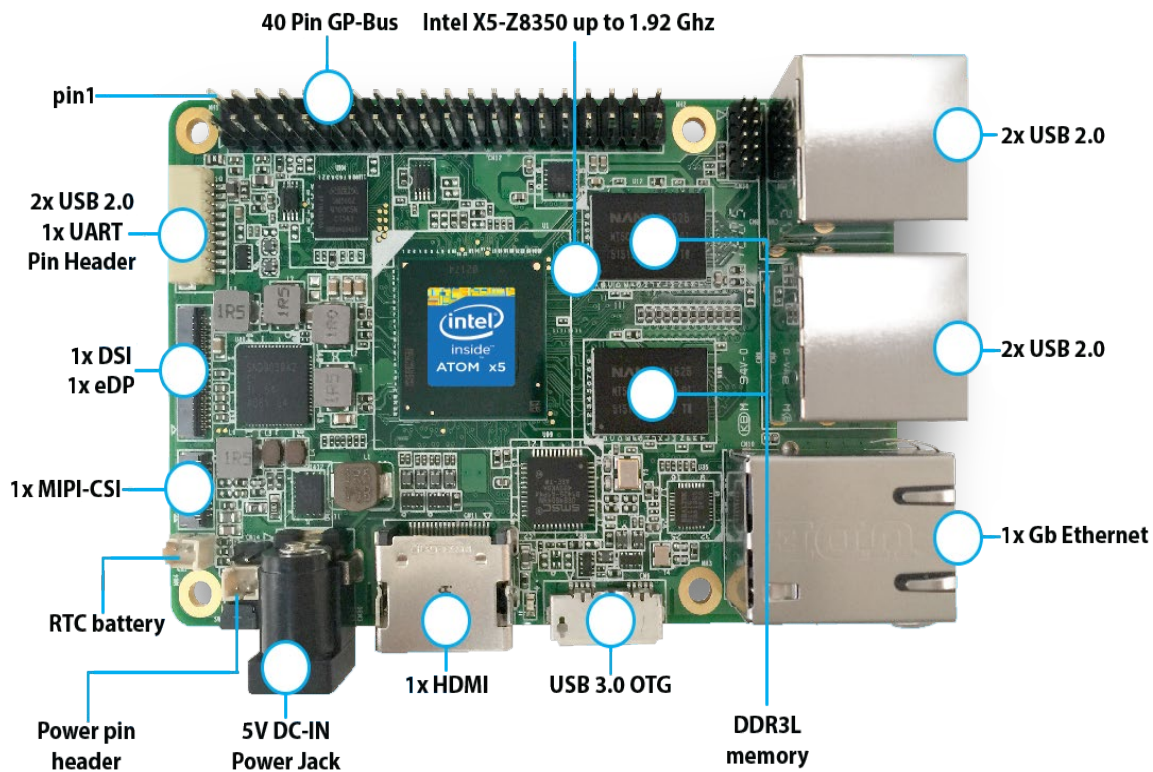


Smart light
switches





A collection of various smart home security devices. The top row includes a white spherical camera with a blue lens, a white square outdoor camera, a black cylindrical door sensor, a white rectangular base station, a white cylindrical motion sensor, and a white oval doorbell with a red lens. The bottom row features a white square Aeotec sensor, a white square base station with several smaller white sensors, a white Reolink dome camera, a white Hikvision bullet camera, and a white Hikvision dome camera.



z-wave controller

zigbee controller

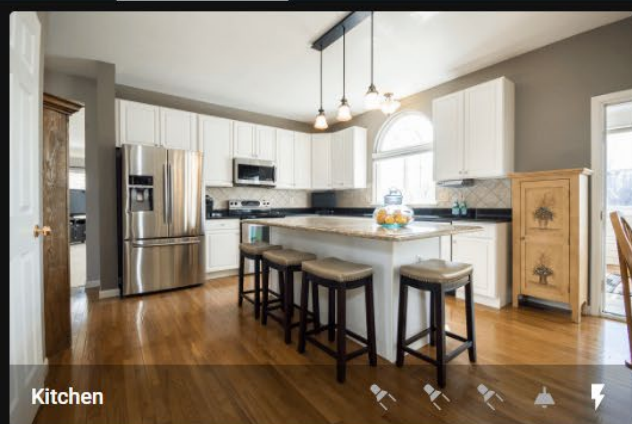
BLE controller

WiFi hotspot

3G/4G USB dongle





Home Assistant User Interface



Kitchen Lights (z-wave)

-  Ceiling Lights ☐
-  Pi Lights ☐
-  Countertop Lights ☐
-  Hidden Lights ☐
-  Back Yard Lights ☐


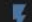


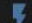
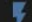






Smart Plugs (z-wave)

-  LR Floor Lamp ☐
-  LR Table Lamp ☐
-  Attic_Yeelight ☒
-  Attic Ceiling Lights ☐
-  Washing Machine ☒

Fusebox (relays)

-  R0-nothing (off) ☐
-  R1-plugs (on) ☒
-  R2-plug_panel (off) ☐
-  R3-boiler (on-off) ☐
-  R4-boiler-timer (on) ☒

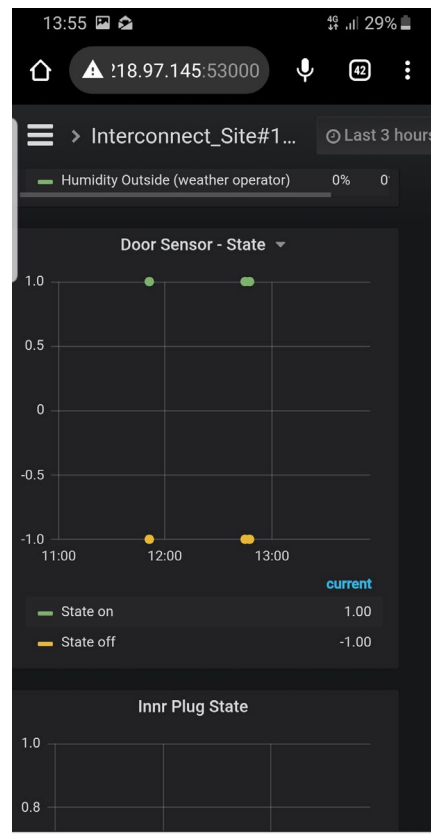
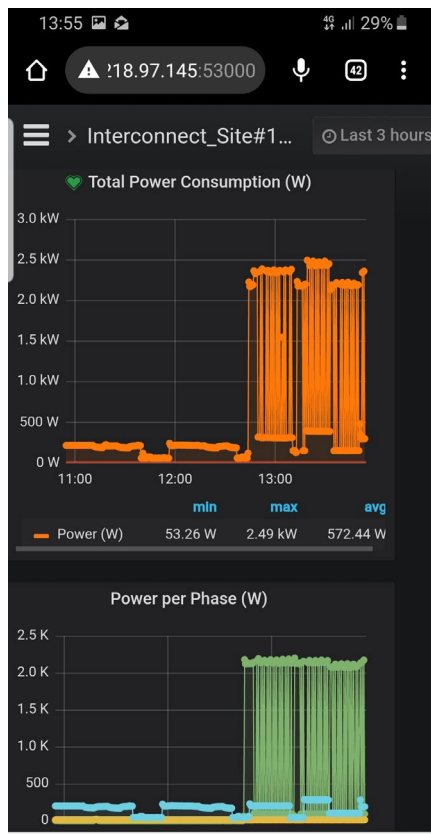
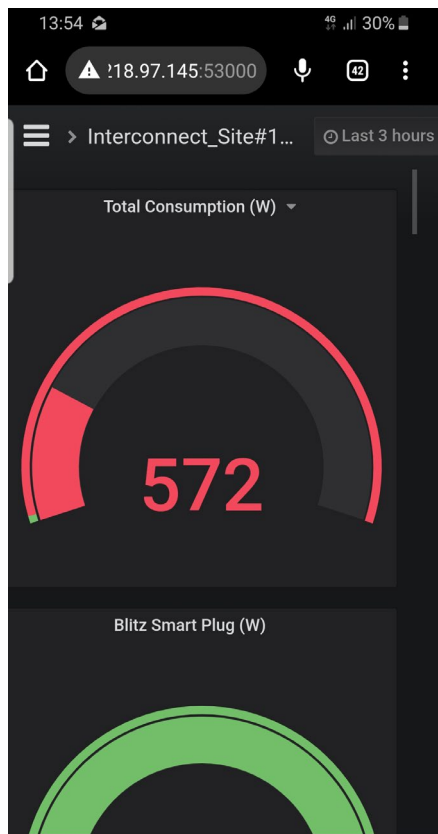
Smart Plugs / Lights (WiFi)

-  Sonoff01 Bulb (LR) ☐
-  1st_floor Corridor Lights ☐
-  1st_floor Bathroom Lights ☐
-  1st_floor Bathroom Fan ☐
-  BW-SHP2 (Bedroom) ☐
-  Front Yard Light ☐
-  shelly 1PM (LR) ☐
-  BW SHP8-1 (Attic) ☒
-  Kitchen Plug (SHP8) ☒
-  sonoff TH16 (Office) ☐
-  Sonoff POW for Strobe ☐
-  Shelly1L (balcony) ☐

Accessible via smartphone, tablet, laptop/PC or even smartwatch from anywhere, anytime



Data Visualization



Accessible via smartphone, tablet, laptop/PC from anywhere, anytime



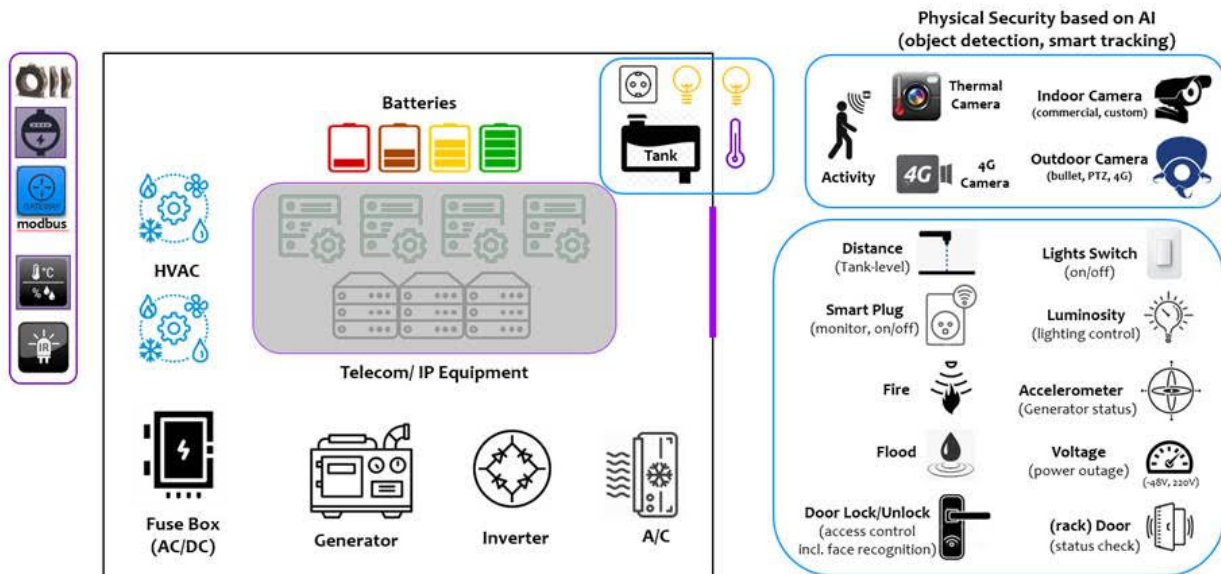
Internal Apps/Solutions/Tools for Telco Site Buildings (1/2)

- AC/DC Power Energy Monitoring (@phase level, total) | Modbus-based solution
- Energy Management (manual & rules/events-based)
- Remote management of any Modbus enabled node/element (HVACs, Inverters, power generators, etc.).
- A/C splits remote control @telco sites:
 - Change A/C temp, fan speed, ... remotely (+massive commands)
 - Change A/C temp automatically based on local temp and/or HW temp thresholds
- Remote configuration of eNBs (NOKIA 4G) | automated “script” for specific actions (e.g., switch-off radios)
- Temperature, humidity, air-quality (CO₂, CH₄, CO, LPG, dust, etc.) monitoring. Sensors for fire, flood, door/window/rack door status, etc. are available too.



Internal Apps/Solutions/Tools for Telco Site Buildings (2/2)

- e2e physical security
 - (any, custom) object detection using AI -> combined with PIR/MW activity detectors @perimeter
 - object tracking [virtual fence] + alerting + visualization + visual/audio alerts (incl. voice announcements)
 - Supports any wired/wireless camera from any vendor (HIKVISION, DAHUA, REOLINK, etc.), both commercial and custom indoors/outdoor ones
- Access Control -> Face recognition, NFC -> door lock /unlock
- Antenna/MW dish tilt module (NB-IoT) | alerting | powered by -48V, PV, battery
- Voltage (220V, -48V DC) monitoring NB-IoT module for microBS sites alerting





SWITCHES

CLIMATE

ALARM

AIRQ

INDOOR_SENSORS

OUTDOOR_WEATHER

POWER & ENERGY

CAMERAS

CASTING

AUTOMATIONS

SYSTEM

MISC

Indoor Temp Aqara@LR (zigbee)

24.9 °C



Temp @Sonoff TH01_Attic (zigbee)

27.9 °C



Temp @ZW100-Hallway (z-wave)

25.0 °C



shelly H&T temp

28.2 °C



shellyUni#2_DS18B20 @Attic

27.7 °C



zigbee_outdoor



FrontYardDoor



Hallway

Environmental (zigbee)



AqaraPIR_Front_Yard Temperature

32.0 °C



Indoor Temp Aqara@LR (zigbee)

24.9 °C



Indoor Humi Aqara@LR (zigbee)

60.5 %



Indoor Pressure Aqara@LR (zigbee)

970 hPa



DoorToBasement Temperature

27.0 °C

Sonoff TH01 Attic (zigbee)



Temp @Sonoff TH01_Attic (zigbee)

27.9 °C



Humi @Sonoff TH01_Attic (zigbee)

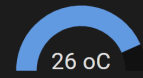
50.4 %



zigbee_LR



FibEye_LR



Custom_LR

Environmental (WiFi)



LRtemp

26 °C



LRhumi

61.2 %



shelly H&T temp

28.2 °C



shelly H&T humi

43.5 %



myShelly_1PM Temperature

44.1 C



Shelly1L Temperature (balcony)

42.46 °C

Luminosity



AqaraPIR_Front_Yard

1,000.0 lx



Lux @PIR-LR (zigbee)

203.0 lx



Lux @PIR-Kitchen (zigbee)

43.0 lx

Nest Thermostat



Nest Temperature (Hallway)

25.73999 °C



Nest Humidity (Hallway)

54.0 %

Environmental (z-wave)



Temp @Front-Yard Door (z-wave)

25.7 °C



Temp @ZW100-Hallway (z-wave)

25.0 °C



Temp @FibaroEye-LR (z-wave)

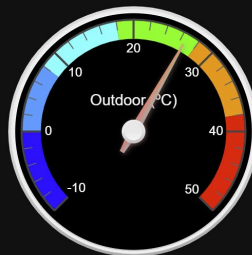
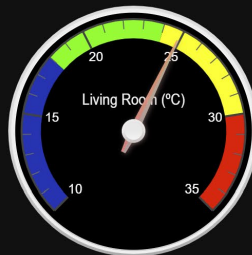
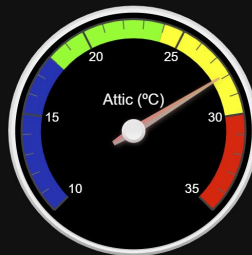
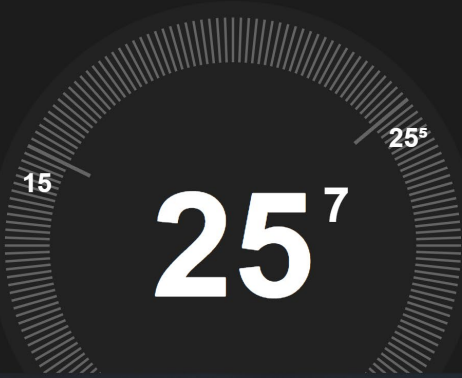
26.9 °C

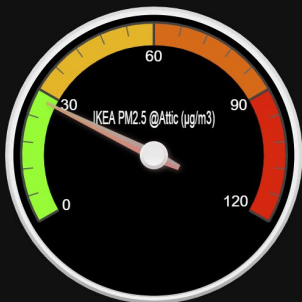
[SWITCHES](#)[CLIMATE](#)[ALARM](#)[AIRQ](#)[INDOOR_SENSORS](#)[OUTDOOR_WEATHER](#)[POWER & ENERGY](#)[CAMERAS](#)[CASTING](#)[AUTOMATIONS](#)[SYSTEM](#)

Living-Room Thermostat



1st-Floor Thermostat



[SWITCHES](#)[CLIMATE](#)[ALARM](#)[AIRQ](#)[INDOOR_SENSORS](#)[OUTDOOR_WEATHER](#)[POWER & ENERGY](#)[CAMERAS](#)[CASTING](#)[AUTOMATIONS](#)[SYSTEM](#)[MISC](#)

SEN0177 (PM 2.5)

14 ug/m3



SEN0177 (PM 1.0)

11 ug m3



SEN0177 (PM 10)

17 ug m3



IKEA PM2.5

28 ug/m3





SWITCHES

CLIMATE

ALARM

AIRQ

INDOOR_SENSORS

OUTDOOR_WEATHER

POWER & ENERGY

CAMERAS

CASTING

AUTOMATIONS

SYSTEM

MISC



inter69



Sun



192.1...



Off



Updater



idle

Washing-Machine
Powered DownWashing-Machine
0.3 WBasement
74.30 W

Alarm / Alert / Siren



homealarm



BW-IS5@1stFloor

Dry



BW-IS9@1stFloor

Dry



BW-IS5@Basement#1

Dry



BW-IS5@Basement#2

Dry



shellyflood_ac9f51_fridge

Dry



Heiman Siren @Attic (On/Off)



Heiman Siren (LR) (On/Off)



Who's @Home



Family

Away



george_phone

Away



maria_phone

Away



lambros_phone

Away

Motion / Status



AqaraPIR_Front_Yard

Clear



SonoffPIR@Attic (zigbee)

Clear



AqaraPIR_BackYard

Unavailable



Dahua@BackYard Motion

Detected



HIK@LR Motion

Clear



AqaraPIR@LR (zigbee)

Detected



FibaroEyeMotion@LR (z-wave)

Off



FibaroEyeBurglar@LR (z-wave)

0



AqaraPIR@Kitchen (zigbee)

Clear



AeotecZW100@Hallway Status (z-wave)

Off



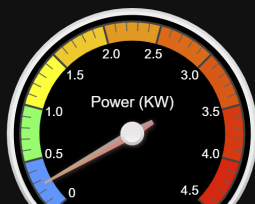
AeotecZW100@Hallway Burglar (z-wave)

0



Sonoff-MS01-corridor

Unavailable



Door/Window Status



YardDoorSensor (εξώπορτα)

Closed



Aqara@MainEntranceDoor (zigbee)

Closed



DoorToBasement

Closed



Fibaro@FrontYardDoor (23=closed)

23



Fibaro@FrontYardDoor (z-wave)

Off



Sonoff_DS01_rightAtticWindow

Open



Sonoff_DS01_leftAtticWindow

Open



Sonoff-DS01-1stFloorDoor

Open



Sonoff_DS01_bedroom2

Unavailable



Sonoff_DS01_bedroom1

Closed

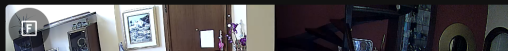


Sonoff_DS01_bedroom3

Unavailable

Total Power Consumption

0.258722 KW





SWITCHES

CLIMATE

ALARM

AIRQ

INDOOR_SENSORS

OUTDOOR_WEATHER

POWER & ENERGY

CAMERAS

CASTING

AUTOMATIONS

SYSTEM

MISC



Kitchen



Kitchen

Ceiling

Pi

Countertop

Hidden



Plugs

Floorlamp

Tablelamp

innr-220



Fusebox (relays)



R0-nothing (off)



R1-plugs (on)



R2-plug_panel (off)



R3-boiler (on-off)



R4-boiler-timer (on)



Switchbot-WashingMachine



Attic

Leds

LEDback

CO2

LEDstrip



Yard

Entrance

BackYard

FrontYard

Balcony



Blanket

Maria

George



Smart Plugs (z-wave)



LR Floor Lamp



LR-Table-Lamp



Attic_Yeelight



Attic Ceiling Lights



Washine-Machine (new)



Shelly1PM@FrontDoor



EntranceDoorLight



Shelly 1PM Status

Off



Shelly 1PM Power

0.00 W



Shelly 1PM Energy

0.61 KWh



Shelly 1PM Temperature

43.98 oC

Smart Plugs / Lights (WiFi)



Sonoff01 Bulb (LR)



1st_floor Corridor Lights



BW-SHP2 (Bedroom)



shelly 1PM (LR)



BW SHP8-1 (Attic)



Kitchen Plug (SHP8)



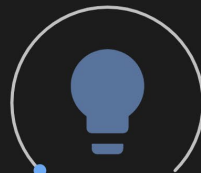
Sonoff POW for Strobe



Shelly1L balcony



Aqara_T1_lights_switch on_off



Yeelight (attic)

What's "on"



BW-SHP2 (Bedroom)



Washine-Machine (new)





SWITCHES

CLIMATE

ALARM

AIRQ

INDOOR_SENSORS

OUTDOOR_WEATHER

POWER & ENERGY

CAMERAS

CASTING

AUTOMATIONS

SYSTEM

MISC

- WelcomeHomeGeorge ☒
- WelcomeHomeMaria ☒
- Door Locked? @GHome ☐
- SpeakHubMax_EntranceDoorOpened ☒
- Notify_EntranceDoorOpened ☒
- Notify_NestCAM_on_person_detection ☐
- Notify_LowBattery_YeelightRED ☐
- Temperature_Daily ☒
- Weather_Report_GoogleHome ☐
- SayAlarmOFF@ALEXA ☐
- Have_a_Nice_Week ☒
- GeoBlanket-On-Off ☐
- MariaBlanket-On-Off ☐
- Maria Left the House ☐
- Unavailable entity detection & notification ☒

BasementLights

- ShellyButton1-basementLightsON ☒
- ShellyButton1-basementLightsOFF ☒

- Auto_Alarm_ON ☐
- Auto_Alarm_OFF ☐
- Intrusion_Snapshots_All_CAMs_Pushover_Alarm_on ☐
- Intrusion_Snapshot_BackYardCAM_night ☐
- Intrusion_AnnounceGH_Lights_Alarm_on ☐
- ALERT_any_WindowDoorOpen_ALARM_ON ☐
- Intrusion_Wyze_FrontYard_Snapshot_ALARM_ON ☒
- Intrusion_DAHUA_BackYard_Snapshot_ALARM_ON ☒
- Siren_Notify_on_Water_Leakage or Fire ☒
- Trigger alarm (alert) while armed away ☐
- AnnounceGH_Lights_Snapshots_Siren when ALARM tri... ☒
- Notify when alarm is Armed in Away mode ☐
- Notify when alarm is Armed in Home mode ☐
- Notify when alarm is Disarmed ☐
- Trigger alarm (alert) while armed at home ☐
- Disarm at Home Alarm everyday morning ☐
- Auto Arm at Home Alarm at night ☐

- Dryer is ON and DONE ☒
- Notify_when_Washing_Machine_Done ☒

- Alert_if_Fibaro_MotionEye_triggered_when_Alarm_ON ☐
- Alert_if_Fibaro_MotionEye_status_changed_when_Alarm_ON ☐
- Alert_if_Fibaro_FrontYardDoor_Open_Alarm_ON ☒
- Alert_if_PIR@Kitchen_on_when_ALARM_on ☐
- Alert_if_PIR@LR_on_when_ALARM_on ☒
- Alert_FibaroEye_Moved ☒
- Alert_Yard_Door_Opened (z-wave) ☐

- Motion_FrontYardPIR_Strobe_ON ☒
- Motion_BackYardPIR_Strobe_ON ☒
- On_Motion_Kitchen_Lights_On ☒
- On_No_Motion_Kitchen_Lights_Off ☒
- On_Motion_Corridor_Lights_ON ☐
- FrontDoorLights_ON_Sunset ☒
- FrontDoorLights_OFF_Sunrise ☒
- FrontYardLights_ON_Sunset ☒
- FrontYardLights_OFF_Sunrise ☒
- Command_Switch_Sonoff_LR_on_off_everyday ☒
- Command_Switch_Shelly_1PM_on_off_everyday ☒
- CorridorLights_Off_After_3min ☒



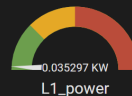
Total Power Consumption

15,341.13 kWh

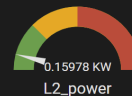


Total Power Consumption

0.260605 kW



L1_power



L2_power



L3_power

Basement (Shelly-EM)

Shelly 1EM Status	On
Shelly 1EM Power	73.81 W
Shelly 1EM Reactive	-23.27 W
Shelly 1EM Energy	695.35 kWh
Shelly 1EM Voltage	227.77 V

Fibaro Plugs' Power

LR-Floor-Lamp-power	0.0 W
LR-Table-Lamp-power	0.0 W
Attic-Yeelight-power	0.0 W
Attic-Ceiling-Lights-power	0.0 W
Washing-Machine-power (new)	0.3 W

Attic (Shelly-EM)

shellyEM_Attic	<input type="checkbox"/>
ShellyEM_ch1_power	173.2 W
ShellyEM_ch1_Voltage	236.5 V
ShellyEM_ch1_Energy	3,250.0 kWh
ShellyEM_overpowering	OK

Shelly-4-Pro@Attic

Shelly 4Pro power1	0.00 W
Shelly 4Pro power2	2.33 W
Shelly 4Pro power3	2.67 W
Shelly 4Pro power4	0.00 W
Shelly 4Pro energy1	0.0 kWh
Shelly 4Pro energy2	0.14 kWh
Shelly 4Pro energy3	0.16 kWh

SHP8@Kitchen

myBW-SHP8 Power	0 W
myBW-SHP8 Energy Total	64.296 kWh
myBW-SHP8 Energy Today	0.0 kWh
myBW-SHP8 Energy Yesterday	0.0 kWh
myBW-SHP8 Current	0.0 A
myBW-SHP8 Voltage	263 V

Fibaro Plugs' Energy

LR-Floor-Lamp-energy	62.11 kWh
LR-Table-Lamp-energy	251.34 kWh
Attic-Yeelight-energy	46.91 kWh
Attic-Ceiling-Lights-energy	14.98 kWh
Washing-Machine_energy (new)	82.54 kWh

SHP8@Attic

myBW-SHP8-2 Power	0 W
-------------------	-----



Cameras

Events

Debug

Documentation

GitHub



attic_outdoors

car

71.09%

6/14/2022

6:49:46 AM

6:50:05 AM



attic_outdoors

car

73.44%

6/14/2022

6:41:07 AM

6:41:14 AM



attic_outdoors

car

70.70%

6/13/2022

1:05:57 PM

1:06:04 PM



attic_outdoors

car

74.02%

6/12/2022

8:34:29 PM

8:34:44 PM



attic_outdoors

car

72.66%

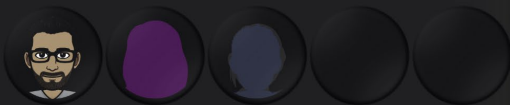
6/11/2022

6:51:43 PM

6:51:56 PM



Home



Floor



0.257141 KW





Thank You!

cfilis@cosmote.gr