



# PharmaLedger

BLOCKCHAIN ENABLED HEALTHCARE

## Trusted healthcare enabled dataspace: *the PharmaLedger use cases*



*IoT Week*

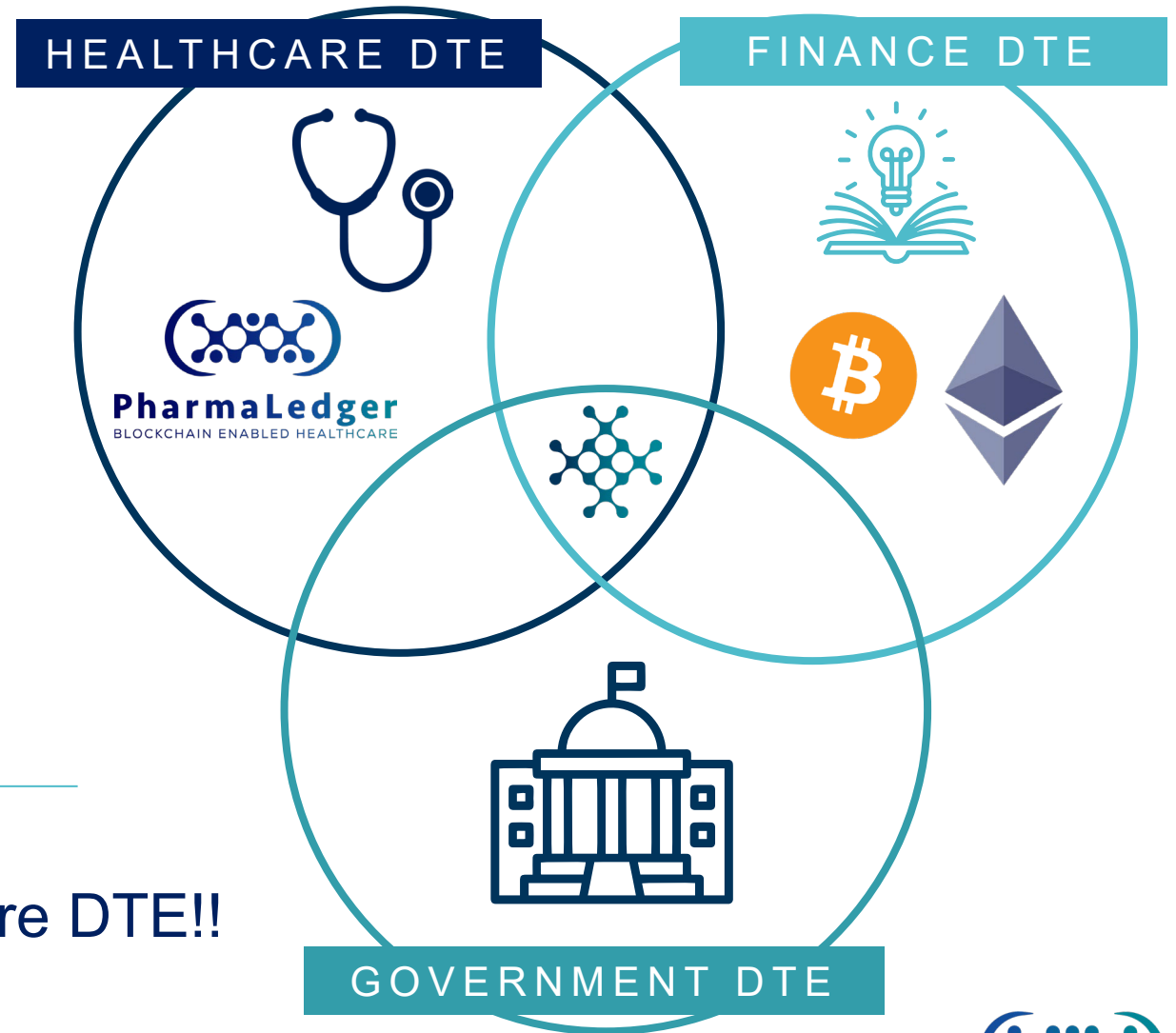
*UPM – Giuseppe FICO /Ma. Eugenia BELTRAN*

# PharmaLedger: A DIGITAL TRUSTED ECOSYSTEM(DTE)

THE BIGGER PICTURE: PHARMALEDGER AS A CORE DTE PLATFORM

A **digital ecosystem** is an interdependent group of actors (enterprises, people, things) that share standardized digital platforms to achieve a mutually beneficial purpose.

- Independent but collaborating parties
- Trust established cryptographically with blockchain
- Organized per industry, geography or incentive
- Common Best Practices



## PharmaLedger: Accelerating a Healthcare DTE!!

# PHARMALEDGER IN A NUTSHELL

## WHO?

Pharmaceutical companies, hospitals, universities, patient organizations, tech companies... **building an ecosystem!**

## WHY?

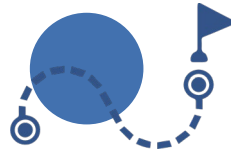
To **empower patients**, increase **digital trust**, enable medicine drug traceability and **data privacy**, and foster a **new culture of collaboration in healthcare**.

## WHAT?

A blockchain-based **platform with reference use cases** in supply chain, clinical trials and health data. A governance function for sustainability and legal, regulatory and data privacy compliance.

## HOW?

A public-private partnership of like-minded, **collaborative partners working together and engaging patients, HCPS, regulators, other IMI projects and 3rd parties.**



**Duration**  
3 years  
Jan 20 – Dec 22



**Consortium**  
29 partners



**EEAB**  
External expert  
advisory board  
9 members



**Budget**  
22 million  
Euros



**Focus Areas**  
Supply Chain,  
Clinical Trial,  
and Health Data



**Ethics Board**  
6 members

NOVARTIS

PDM

Arteevo

Ekon

abbvie

BAYER

janssen

novo nordisk

Roche

Boehringer  
Ingelheim

ICSI

DEMOCRITUS  
UNIVERSITY  
OF THRACE

Bambino Gesù  
OSPEDALE PEDIATRICO

EPF  
European  
Patients  
Forum

POLITÉCNICA

RomSoft

TECHNOVATIVE  
SOLUTIONS

CERTH  
CENTRE FOR  
RESEARCH & TECHNOLOGY  
HELLAS

AstraZeneca

gsk

MSD

Pfizer

Inspired by patients.  
Driven by science.

Ohorach

Uniklinikum  
Würzburg

Hospital  
Espírito Santo e.p.e.

INCM

EF  
ECF

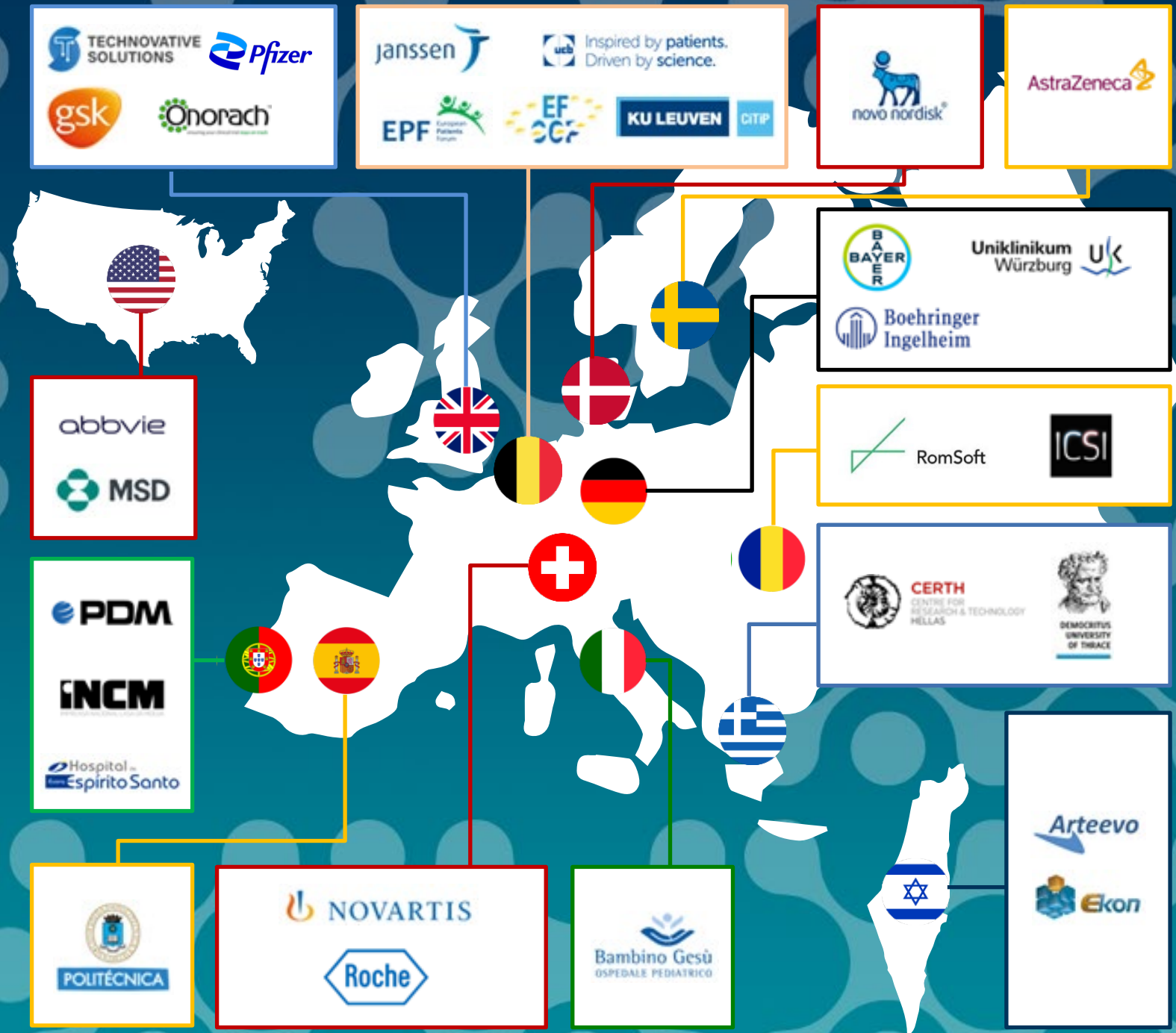
KU LEUVEN  
CITIP



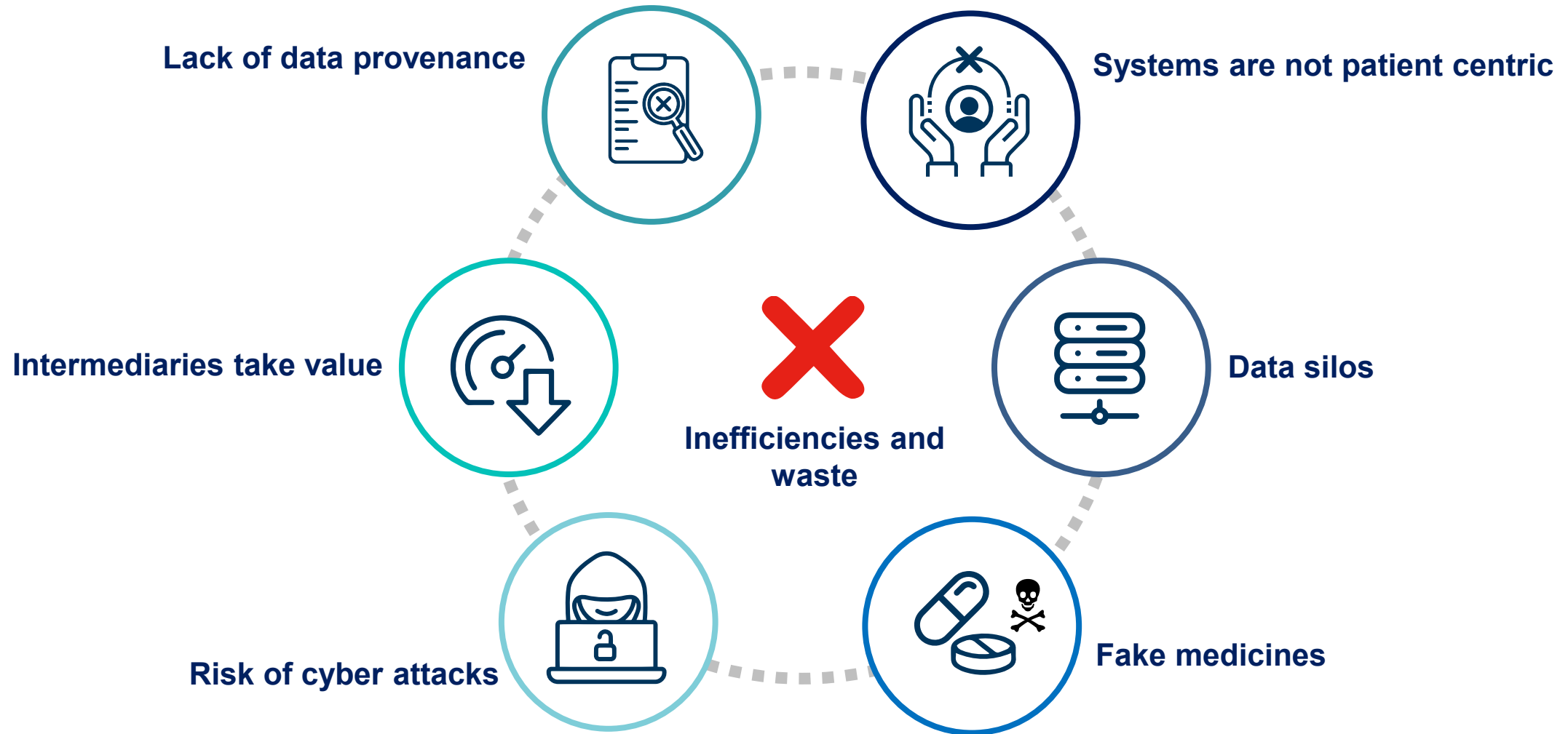
# PharmaLedger

## THE PHARMALEDGER CONSORTIUM

29 Members – 10 EU Member States, Switzerland, Israel and USA

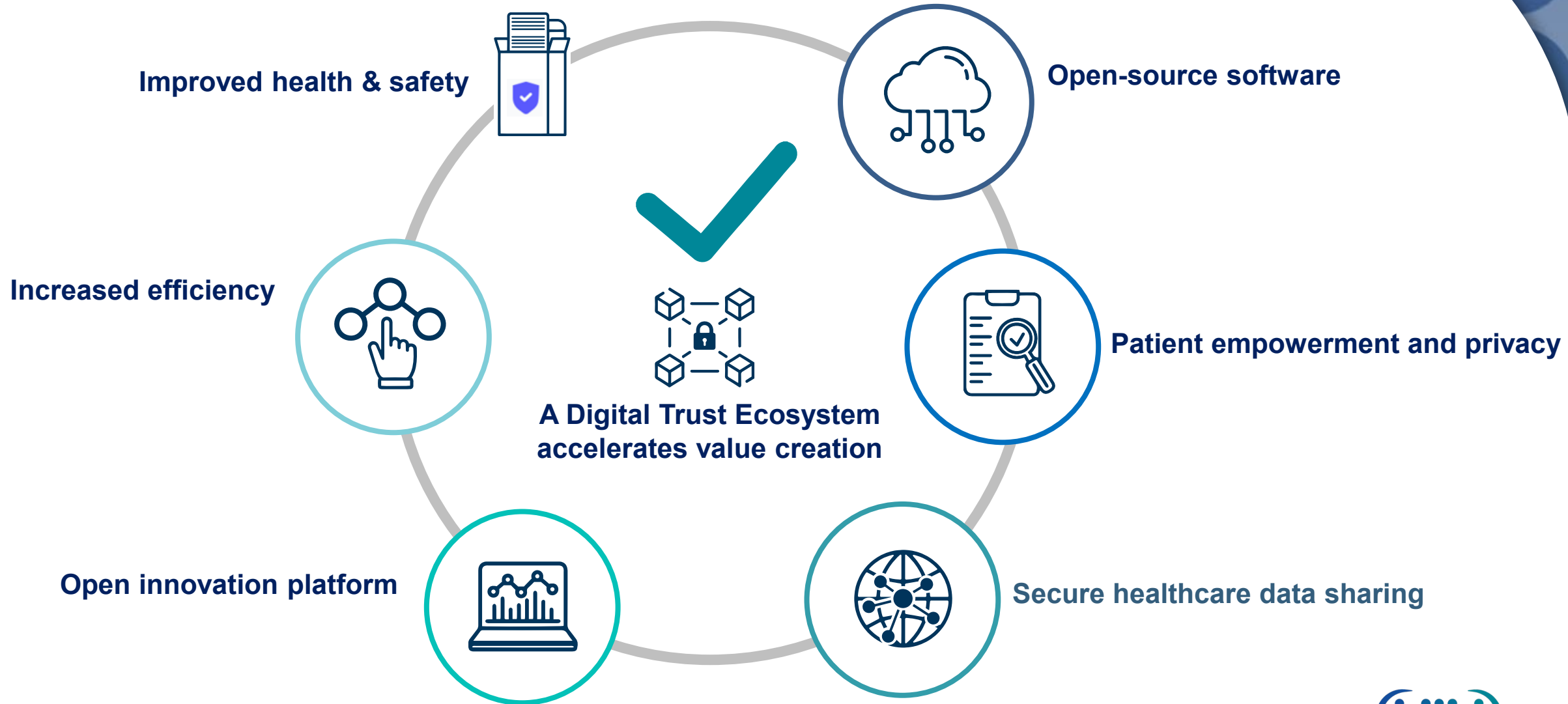


# THE BIG PROBLEM (WHY PHARMALEDGER)





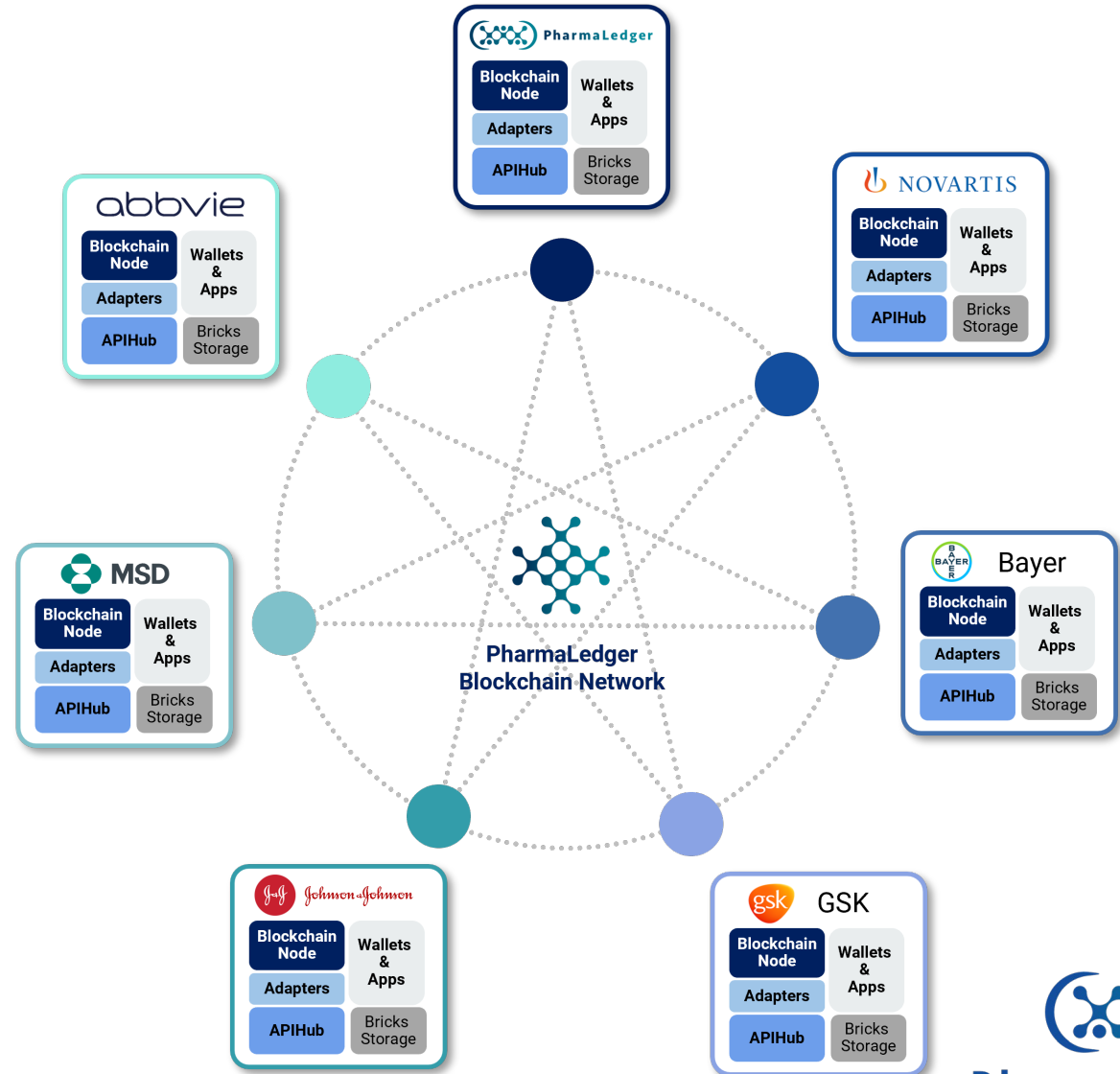
# THE OPPORTUNITY (VISION)



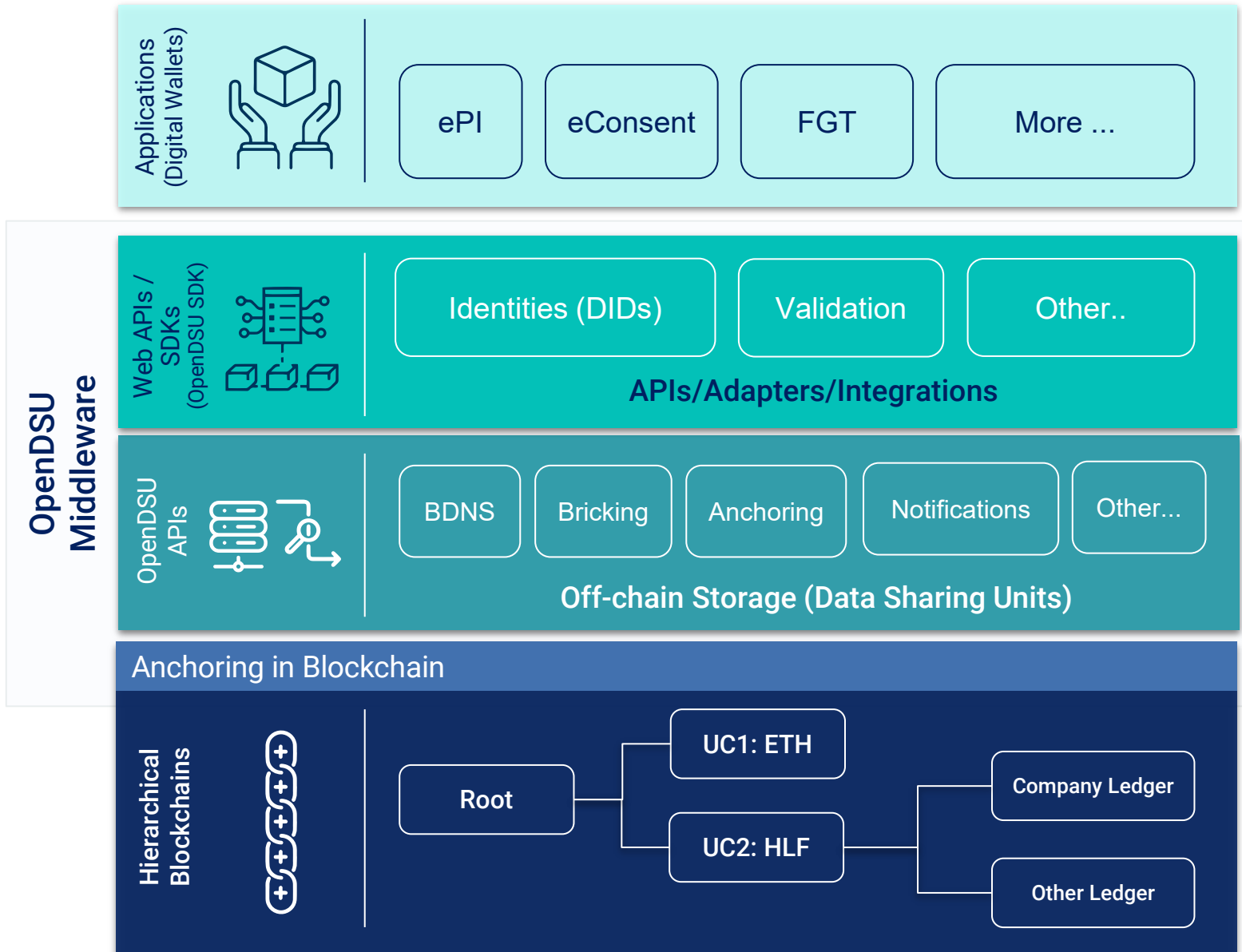
# PharmaLedger PLATFORM ARCHITECTURE: Underpins a trusted dataspace

Cross company  
decentralized  
blockchain network  
with **7 nodes**  
**working now**, more  
to come!

PharmaLedger is  
an enabling  
platform for trusted  
data management



# PHARMALEDGER PLATFORM OVERVIEW



## Applications Use Cases

- Legacy Systems, Systems of Records etc.
- Edge Devices (Mobile Apps, IoT, WebApps)

## Integration APIs, Adapters etc.

- Bridges between Application and Blockchain platform
- Abstraction layer for Applications

## DSU Data Sharing Units

- Encapsulates Data and Business Logic (code)
- Build-in Data Privacy and Confidentiality
- Enables secure sharing

## Anchor Hashlinks, Versions

- Link the DSU in Blockchain
- Guarantees integrity, traceability, provenance, immutability

## Blockchain Hierarchical Blockchains

- Use case specific Blockchain technologies
- All Blockchains are anchored in the Root Blockchain



# THE VISION OF THE OPENDSU SMART WALLETS

## Dynamic, interoperable and portable Digital Wallet

Stored in DSUs

Customizable to the needs  
of the users (individuals  
and companies) : Contain  
DSU embedding SSApps

Supports any device such  
as smartphones,  
wearables, browsers

## DIGITAL SMART WALLET DSU

ePI Mobile  
App



ePI  
Enterprise  
Wallet



DSU  
Explorer



User/  
Credentials  
Management



User Control  
(UI)

FGT Wallet



Clinical  
Trial  
Wallet



IoT Wallet

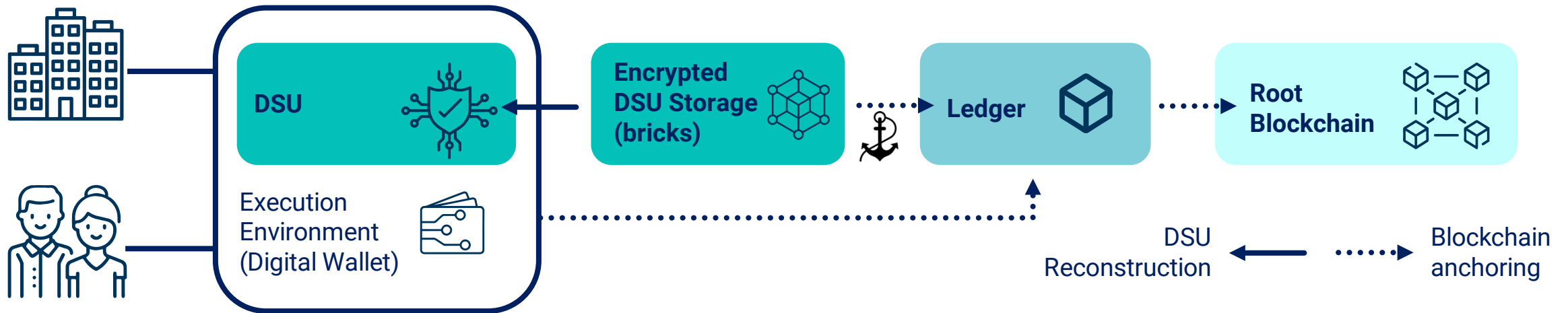


eConsent Wallets



## Generic approach for **all use cases**

- Data not stored on the blockchain but outside blockchain (in use case specific apps/wallets)
- Access to the blockchain through applications (digital wallets), which are handling the keys
- Offering reusability, interoperability between use cases and data portability
- Preserving data confidentiality & privacy



Defining an **open standard** for handling off-chain storage to achieve a **single standard** for interoperability:  
Digital Wallets, Encrypted Data Vaults, Decentralised Key Management Systems, Cloud and Edge Agents



# PharmaLedger DTE: DTE participative dataspace

- DTE partners share and adhere to the same standards and guidelines
- Data stored off chain at the source allowing to share through DSUs.
- DataSpaces shared by members of PharmaLedger now (during project) but will be shared by the Association members (when project finished).
- PharmaLedger dataspace =  $\Sigma$  DTE (could be data providers, users and intermediaries)
- Data sovereignty, privacy and trust support relationships between participants.
- Currently dataspaces can be seen through Use Cases



# USE CASES VIEW



## Clinical Trial eRecruitment

**Anonymized  
matching of  
patients to clinical  
trial inclusion and  
exclusion criteria**



## Clinical Trial eConsent

**Auditable,  
version-  
controlled, real-  
time and  
immutable  
Informed  
Consent Form**



## Clinical Supply

**Trusted Tracking  
of investigational  
medicine  
distribution to the  
patient**



## Finished Goods Traceability

**Visibility of  
commercial  
product inventory  
for replenishment  
and recall  
notifications**



## ePI Electronic Product Information

**Latest approved  
product  
information for all  
manufacturers in  
one app**



## Anti- Counterfeiting

**Multi-factor  
Packaging  
Authentication and  
data analytics**

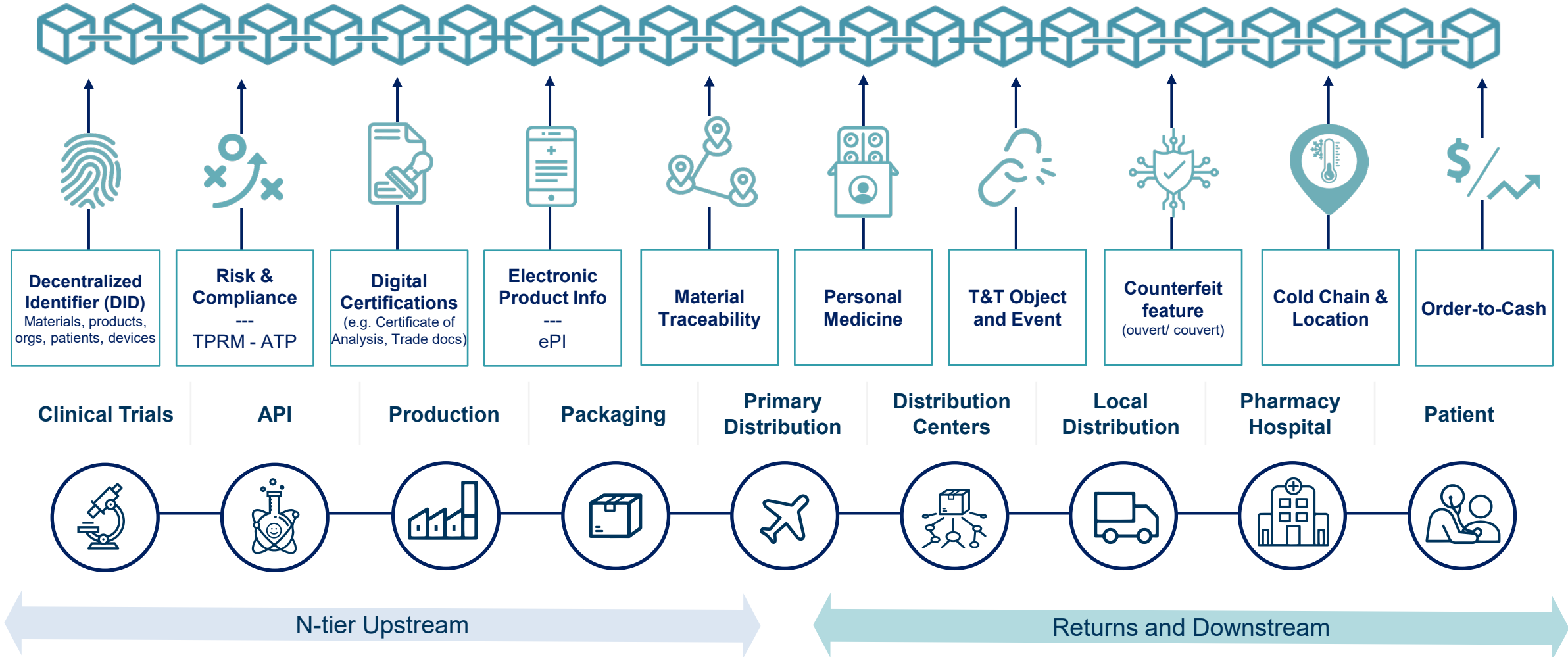


## Medical Device IoT & Personalized Medicines

**Dynamic  
acquisition &  
real-time data  
processing  
for patients**

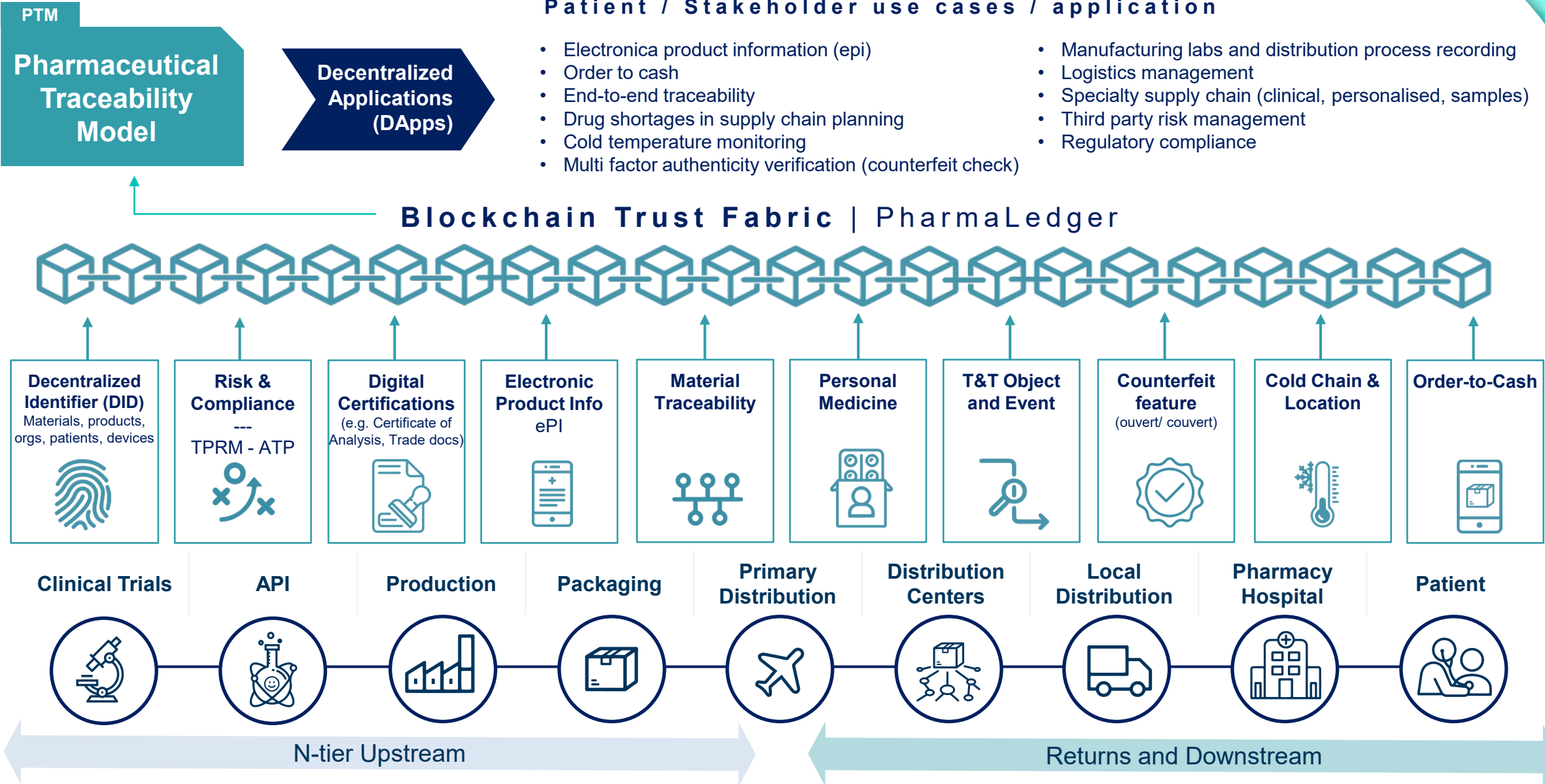
# END TO END SUPPLY CHAIN TRACEABILITY MODEL

## Blockchain Trust Fabric | PharmaLedger



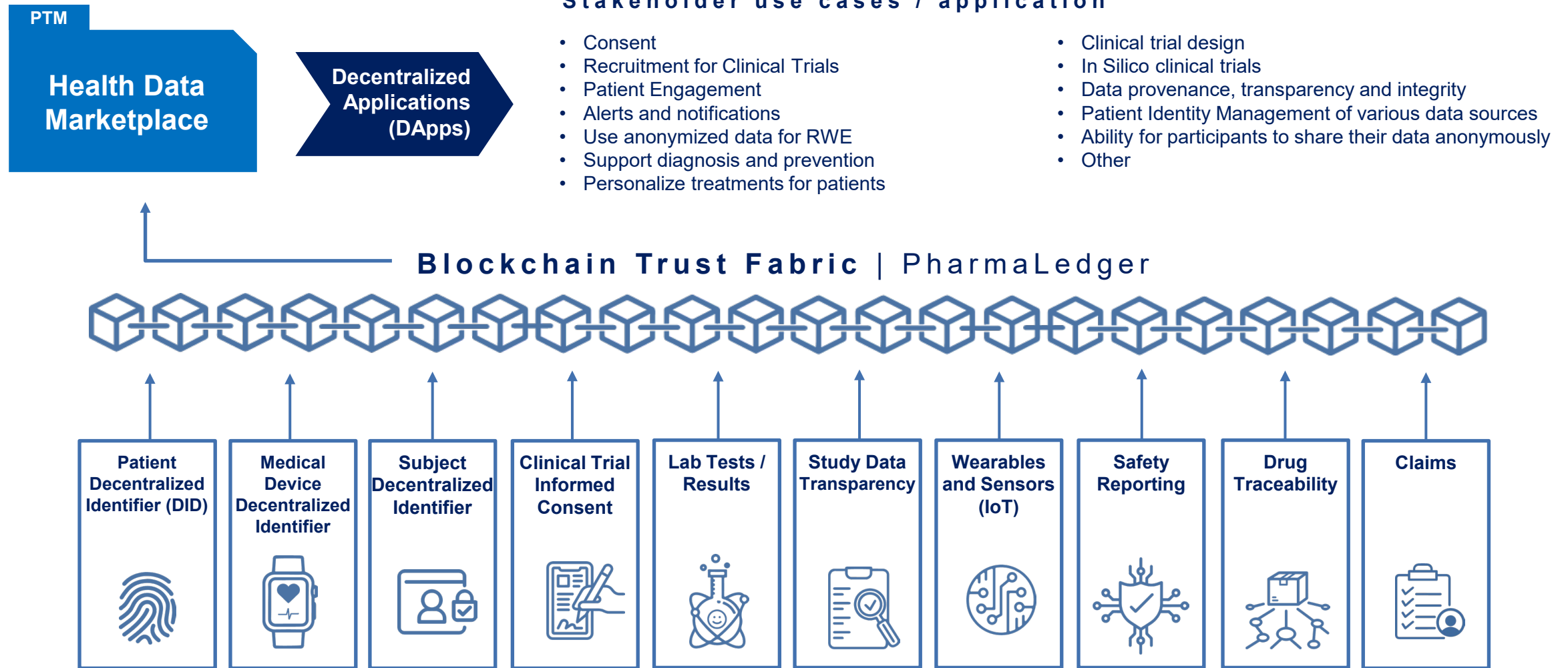
**PharmaLedger**

# END TO END SUPPLY CHAIN TRACEABILITY MODEL

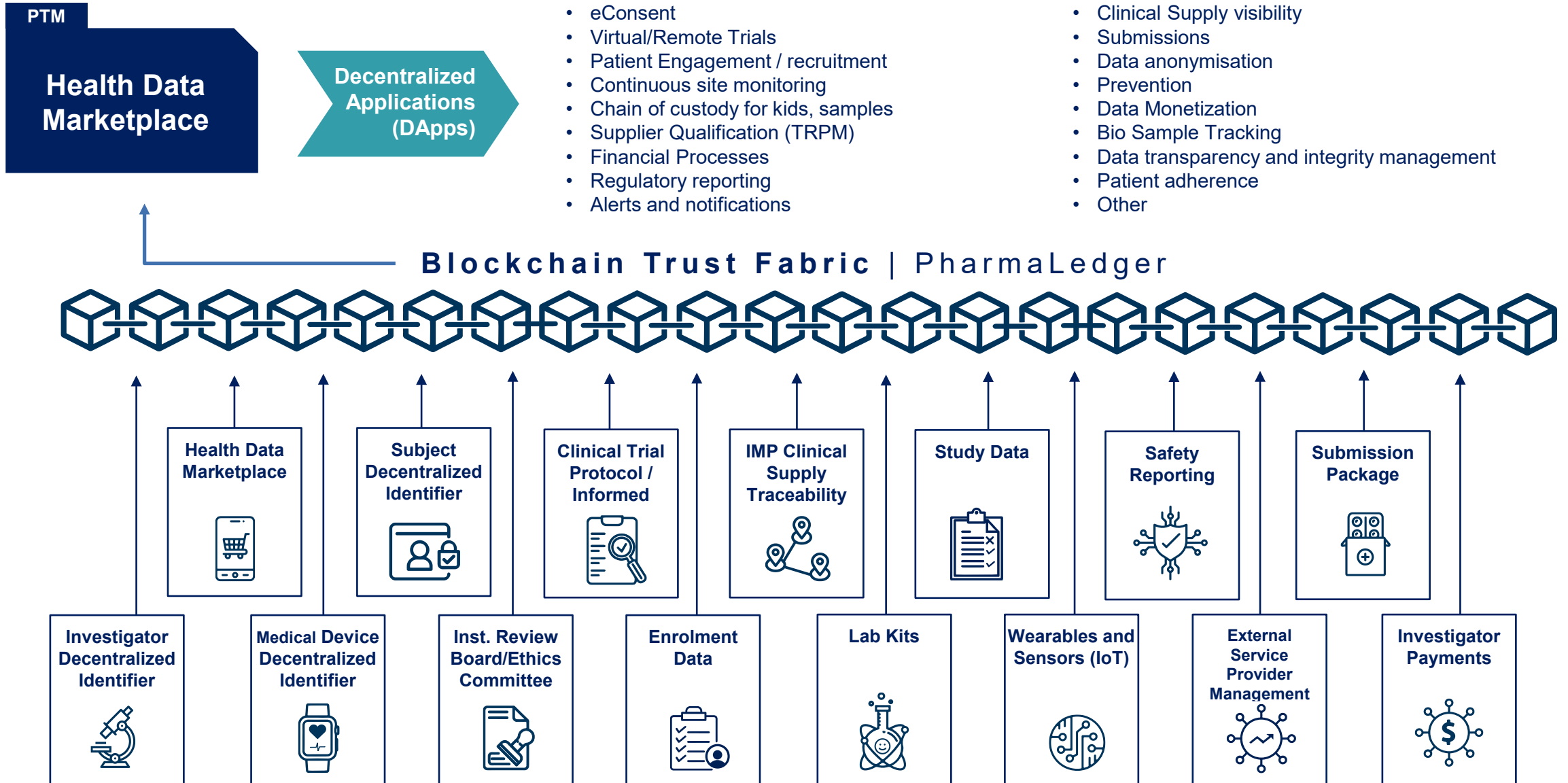




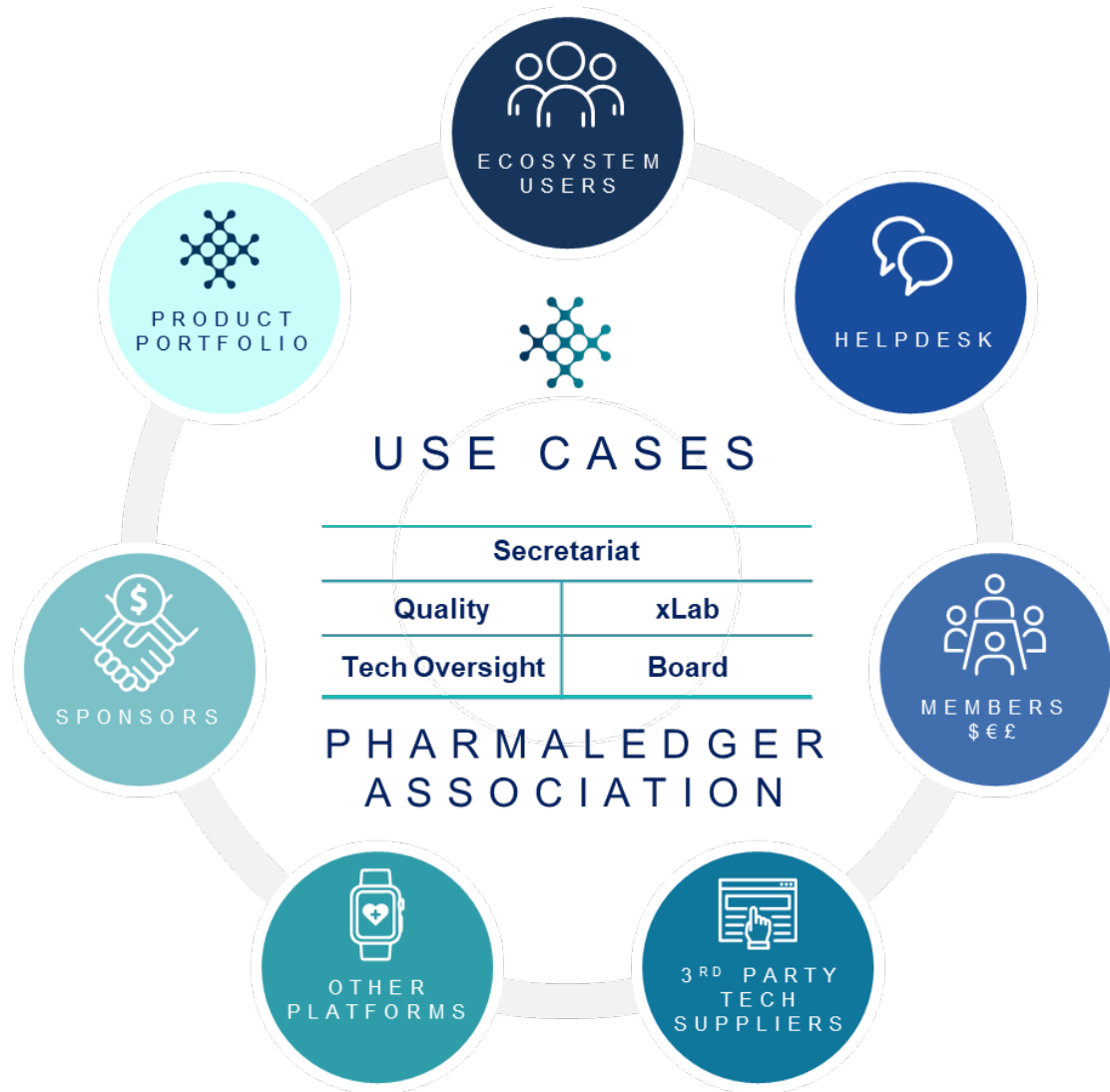
# END TO END HEALTH DATA MARKETPLACE MODEL



# END TO END CLINICAL TRIALS MODEL



# PHARMALEDGER ASSOCIATION BEING CREATED

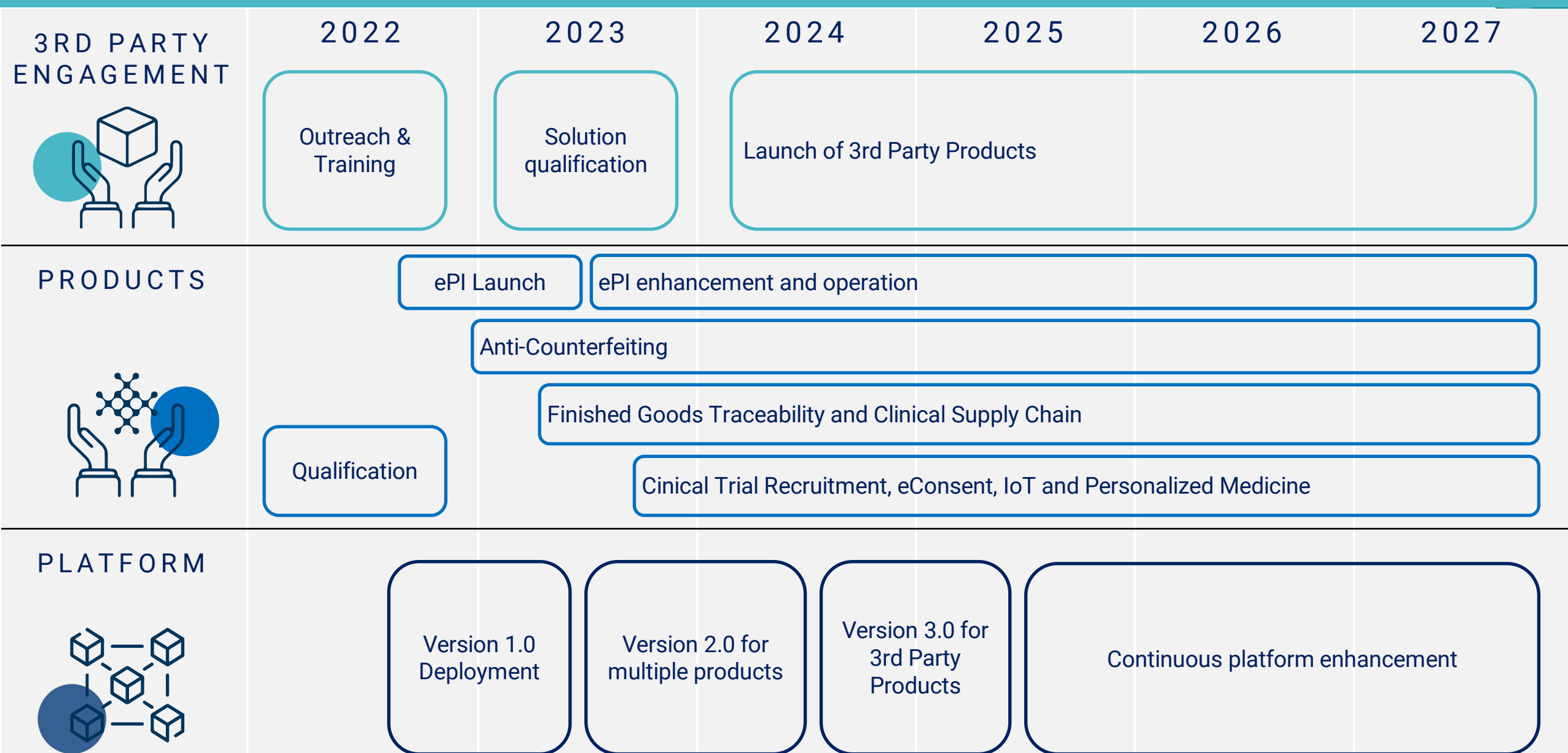


- DTE with sovereign dataspace to support new and innovative services and business processes for a healthcare DTE including private companies and industries as well as academic, governmental and NGO amongst other organizations
- Ensuring privacy, ownership and control of data through data sovereignty
- Secure datasharing
- Validated and tested software, qualified for HealthCare organizations



PharmaLedger

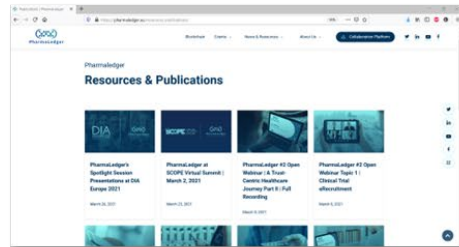
# STRATEGIC ROADMAP



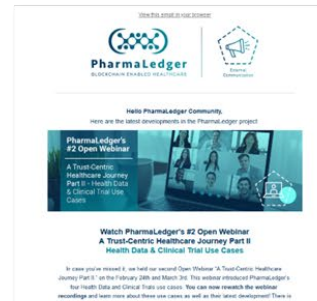
# JOIN US ON THIS JOURNEY

[www.pharmaledger.eu](http://www.pharmaledger.eu)

Contact: Maria Eugenia BELTRÁN ([me.beltran@lst.tfo.upm.es](mailto:me.beltran@lst.tfo.upm.es))



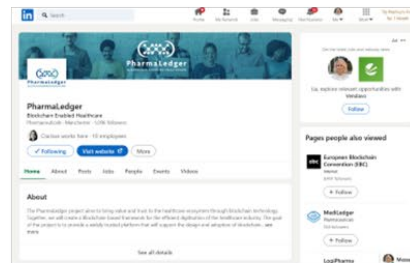
Website



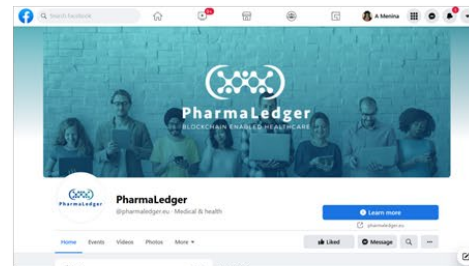
Newsletter



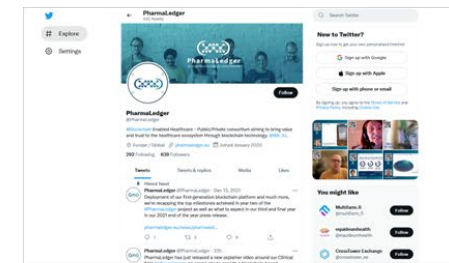
Webinars



LinkedIn



Facebook



Twitter



PharmaLedger

# THANK YOU



## PharmaLedger

*This project has received funding from the Innovative Medicines Initiative 2 Joint Undertaking under grant agreement No 853992. This Joint Undertaking receives support from the European Union's Horizon 2020 research and innovation programme and EFPIA.*

*Disclaimer: Any information on this presentation solely reflects the author's view and neither IMI nor the European Union or EFPIA are responsible for any use that may be made of the information contained herein.*