

LPWA Networks in Practice



Powering the Internet of Things Revolution

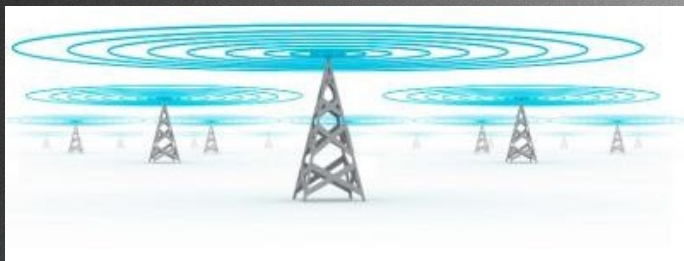
OrbiWise Overview

- ▶ Headquartered in Geneva, Switzerland.
- ▶ Extensive experience in wireless, especially cellular.
- ▶ Complete Network Software Solution based on LoRaWANTM standard.
- ▶ Large Deployments in Asia, EU and Americas.





LoRaWANTM Network Features



Long Range

- ❑ Greater than cellular
- ❑ Deep indoor coverage
- ❑ Star topology



Max Lifetime

- ❑ Low-power
- ❑ >10yr on AA cell
- ❑ >10x vs cellular M2M



Advanced Radio

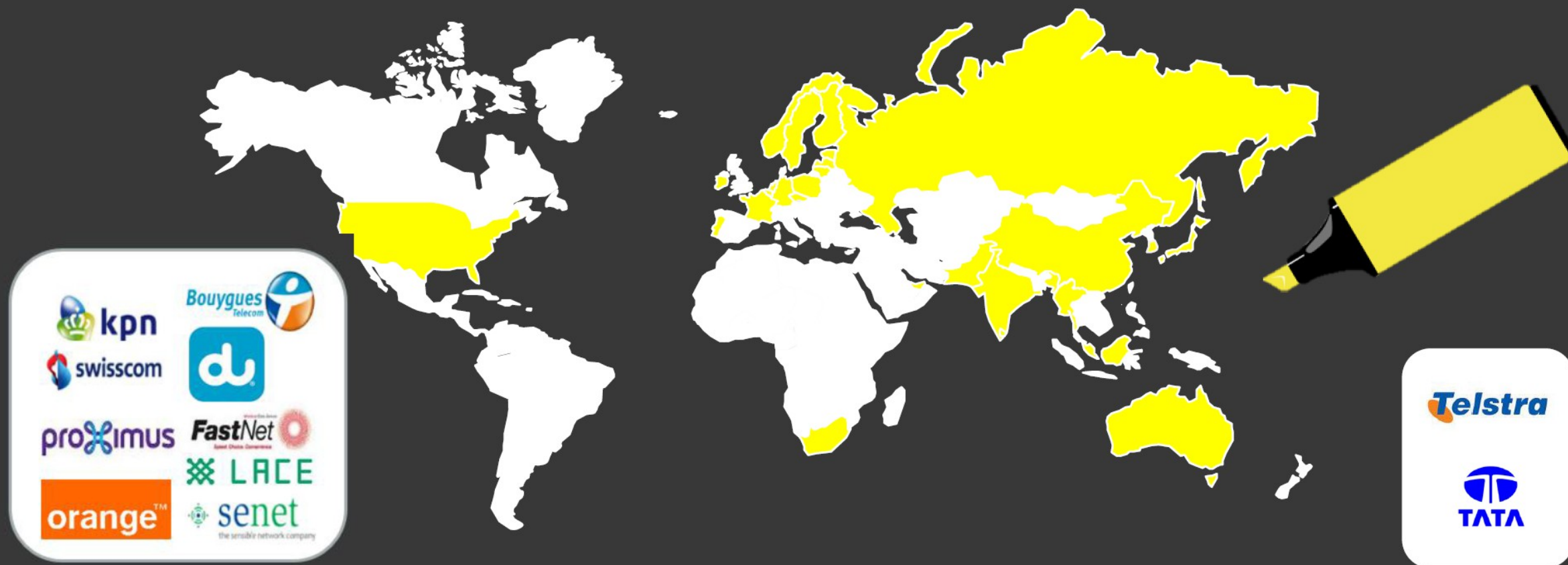
- ❑ Adaptive Radio
- ❑ Multiple Device Classes
- ❑ Spread Spectrum



Low Cost

- ❑ Minimal infrastructure
- ❑ Low-cost end-node

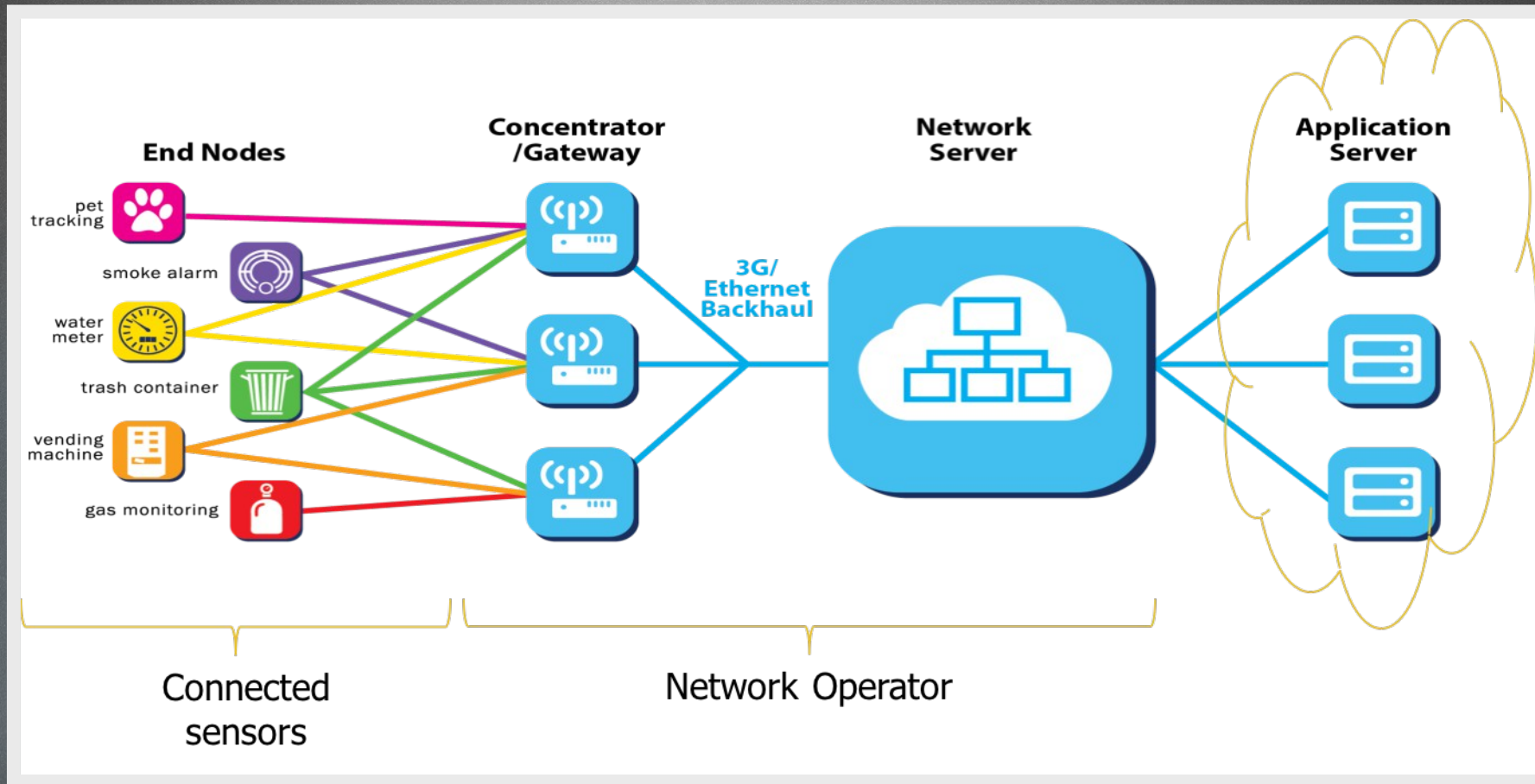
Turning the World YELLOW, where next?



17 Announced national deployments, 53 in decision

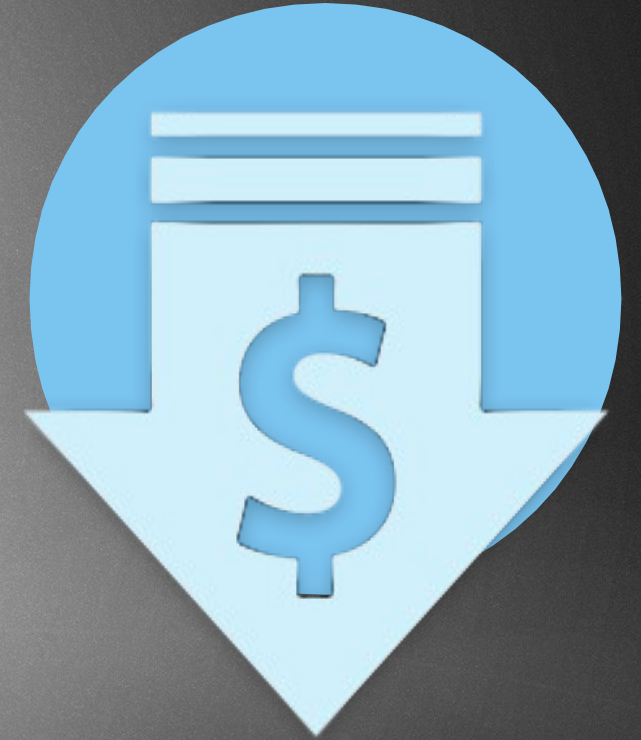
>325 Members

Simplified Value Chain / Ecosystem



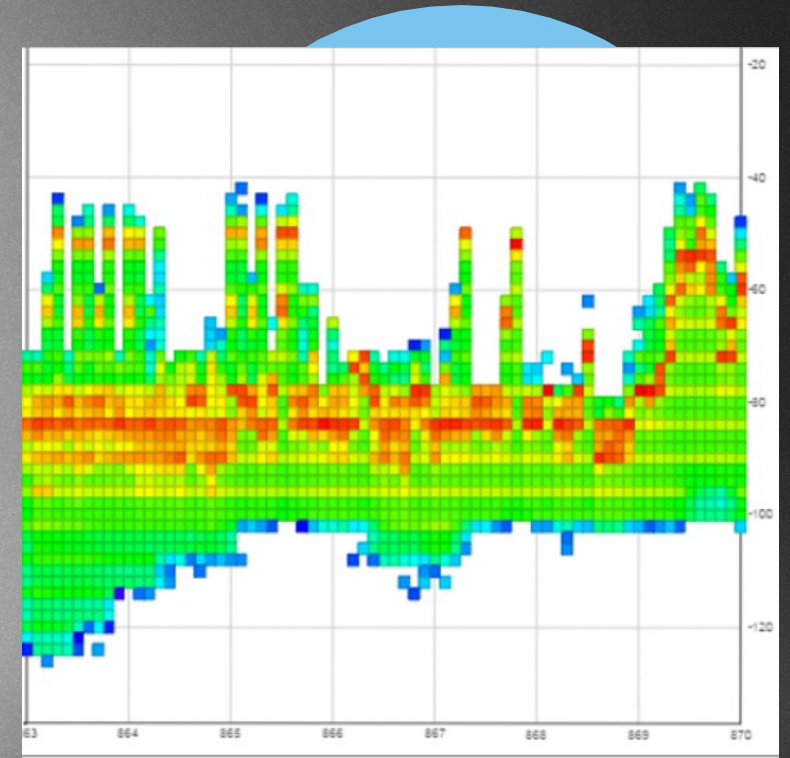
Cost Structure Advantage

- ▶ Industry objective is to deploy billions of devices.
- ▶ Each part of the value chain needs to be cost-optimized to reach this goal.
- ▶ Challenging for traditional wireless technologies.
- ▶ The LoRa ecosystem is there already.



Robustness to Interference

- ▶ Interference in license-free bands could be a challenge...
- ▶ In practice, features in the system allow operation also in high-interference scenarios.
- ▶ Spatial diversity, dynamic link adaptation, spectrum scanning and dynamic frequency allocation, Listen Before Talk are among those techniques.



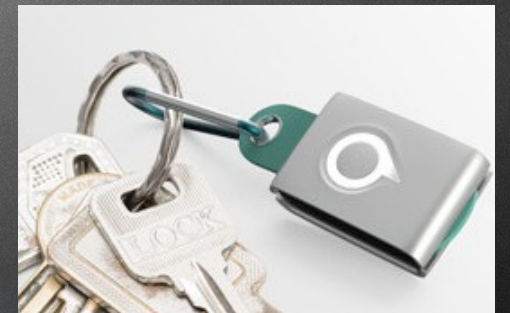
Alternative Deployment Approach

- ▶ In some markets, site acquisition and installation costs dominate initial CapEx investment.
- ▶ Alternative approaches can be pursued in those markets.
- ▶ Small indoor gateways, set-top boxes, consumer's objects, utility poles.... Many alternatives can be pursued case-by-case

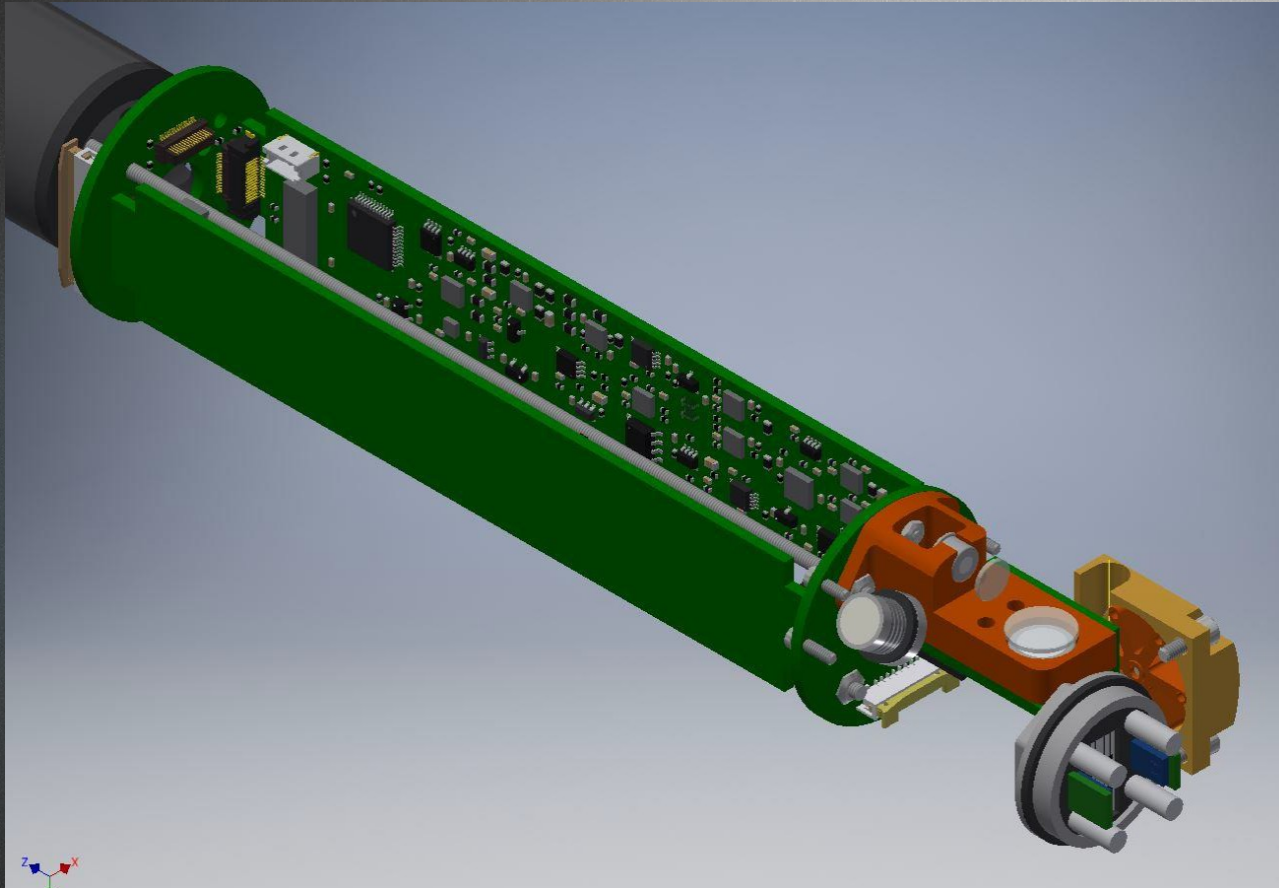


Devices

- ▶ With all new communication systems, there is usually a catch-22 challenge between availability of widespread network service and availability of devices...
- ▶ LoRa Alliance ecosystem effect helps a lot here...
- ▶ Many commercial devices/solutions already available



Water Quality Probe



Fragmentation of Radio Requirements

- ▶ In ITU Region 1, use of 863-870MHz band is rather uniform across different countries
- ▶ In Asia and Latin America, there are often differences between countries in terms of available spectrum and related radio regulations.
- ▶ Can have impact on time-to-market and economies of scale.
- ▶ Support from regulations' agencies important for widespread deployment of these technologies.

Thank You



Powering the Internet of Things Revolution

Products Highlights

- ▶ Advanced network management tools
- ▶ Central Configuration of macro- and nano-gateways
- ▶ Radio configuration, firmware update, reboot, etc.
- ▶ Alert Management: cell load, gateway breakdown, etc.
- ▶ Extensive Network Statistics:
 - ▶ Cell activity, block error rate, cell interference level, rate adaptation performance, network fabric latency, etc.
- ▶ Dynamic spectrum scanning
- ▶ Full Trace and Advanced Issues- Detection Scripting

