

# VISION OF THE POTENTIAL DISRUPTIVE IMPACT OF IoT SOLUTIONS ON THE AGRI-FOOD SECTOR

IoT deployment and business challenges for the Agri-Food sector

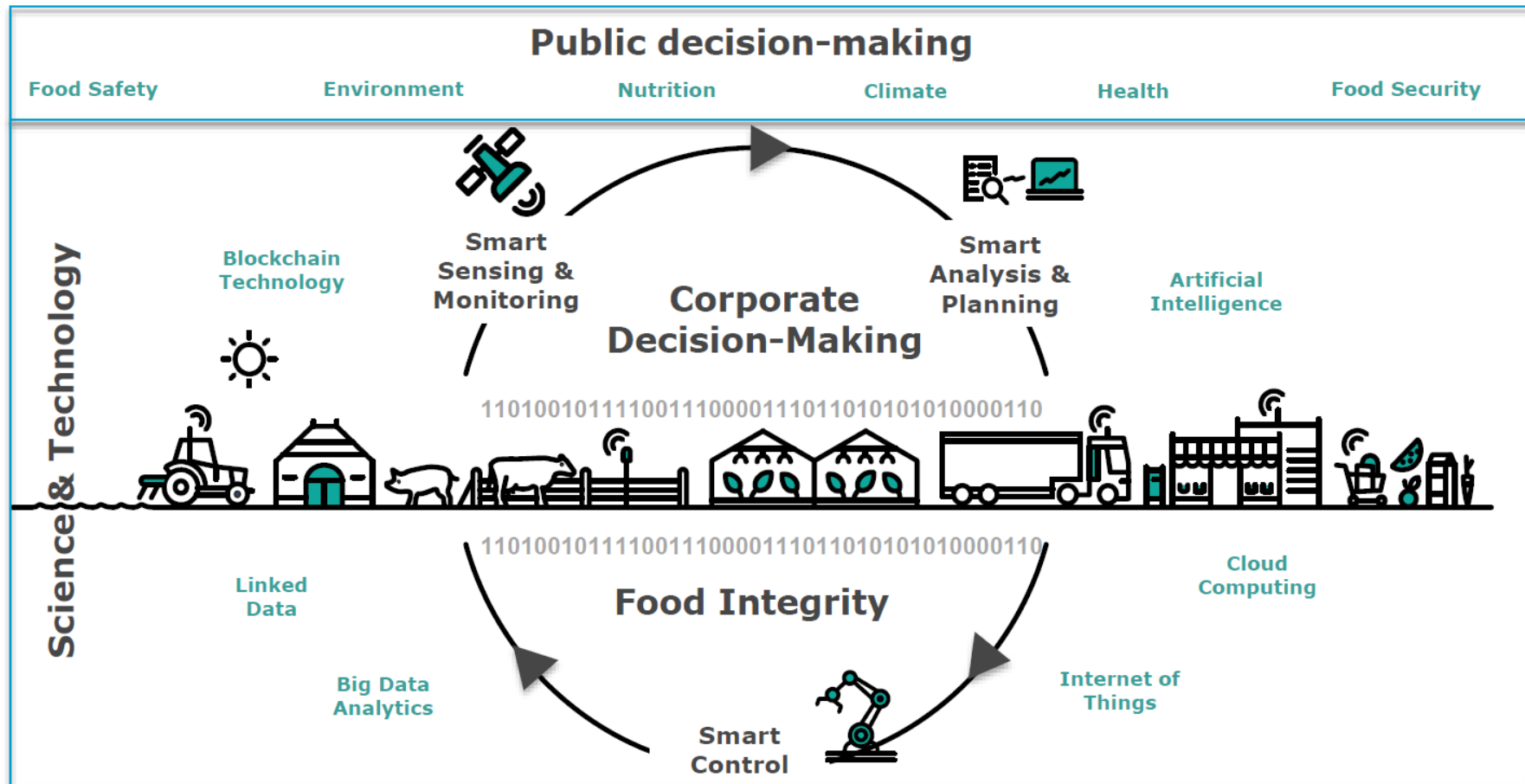
GRIGORIS CHATZIKOSTAS

*June 19, 2019*



# **A VISION OF THE AGRI-FOOD SECTOR IN 2050 THROUGHOUT THE FULL VALUE CHAIN**

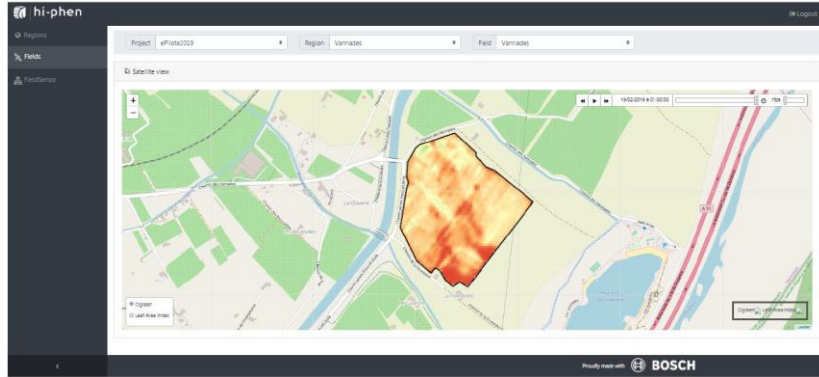
# The Digital Transformation of Agri-Food



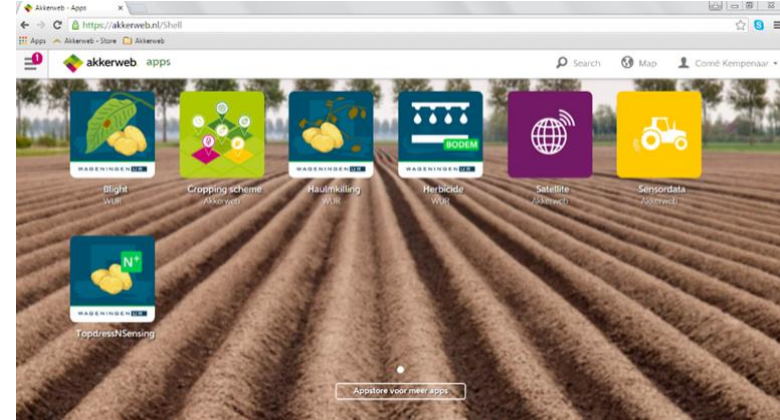
# **IoF2020 SOLUTIONS AND THEIR CURRENT POSITION IN THE DEVELOPMENT CYCLE**



# IoT SOLUTIONS FOR ARABLE FARMING



Crop monitoring dashboard



Akkerweb platform dashboard for soil mapping



Electrical conductivity scanner detecting clay content and organic matter for conductivity zoning

- Arable farming has 44 deployment sites
- Interoperability between farm machines and software is bridged



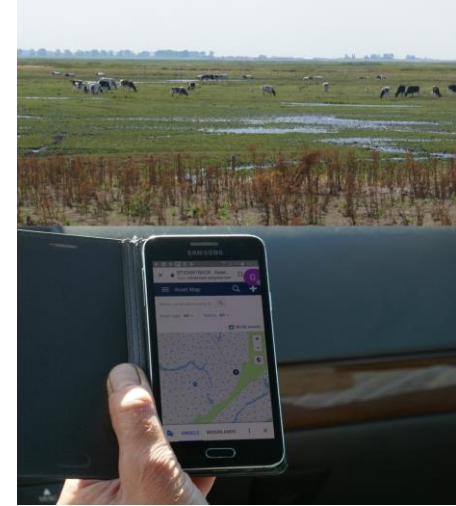
# IoT SOLUTIONS FOR DAIRY FARMING



IoT for remote calibration  
support of milk samples to  
guarantee milk safety and quality



Radio and TV feature of  
artificial intelligence in dairy  
farming



Outdoor beef cattle tracking  
has rescued a trapped cow  
in a nature reserve area

- Connecterra raised additional €4.2m for dairy tech
- Dairy farming has 30 deployment sites around Europe

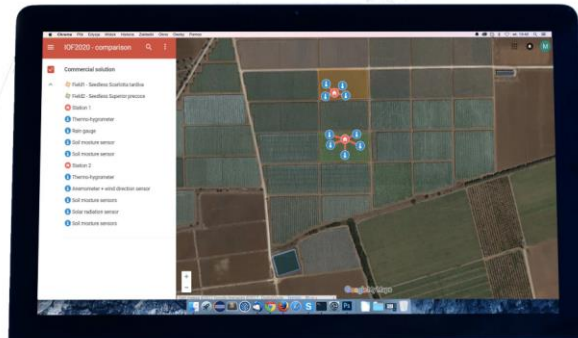




# IoT SOLUTIONS FOR FRUIT



NFC tags for crop monitoring



IoT sensors

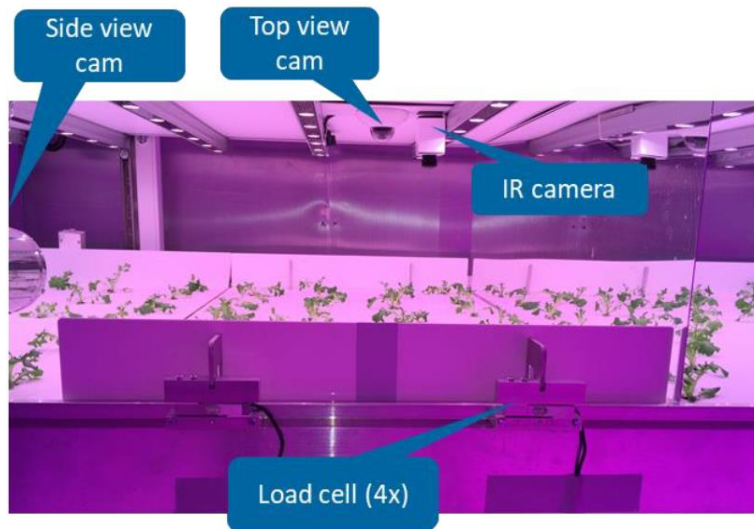


Installations in Romanazzi farm – weather station under the vineyard canopy

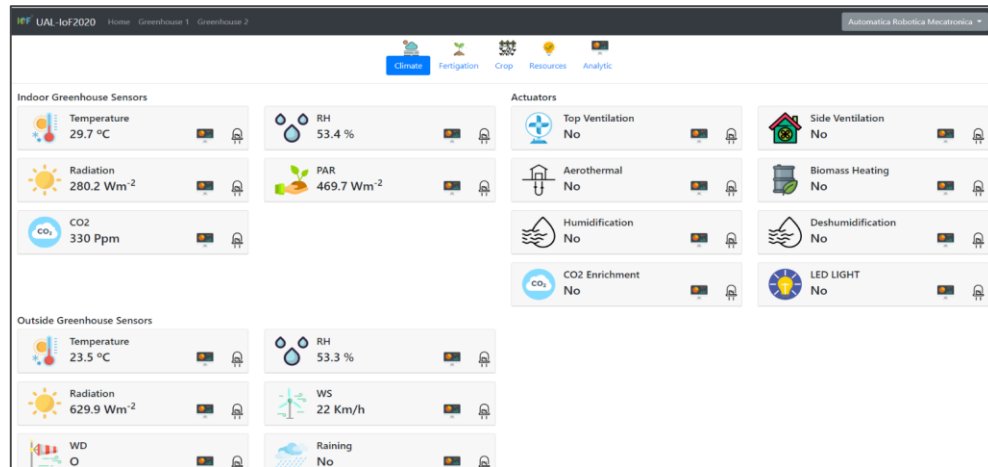
- Fruit Trial has more than 50 deployment sites around Europe
- Wine shipping device (Jodyn Live) test extension to USA & China
- Strong Fruit Trial synergies and collaboration
- EuroPool performs large-scale experimentation in real supply chains



# IoT SOLUTIONS FOR VEGETABLES



Sensors located in a growth layer in one of the climate cells at Signify



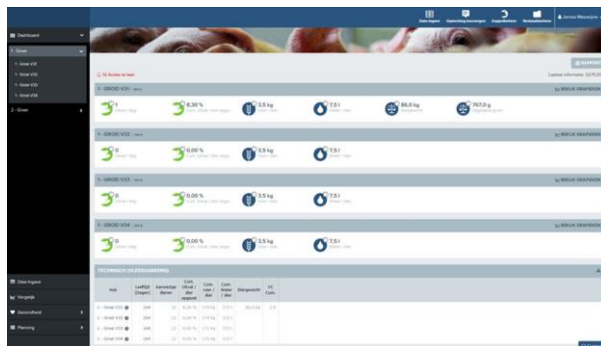
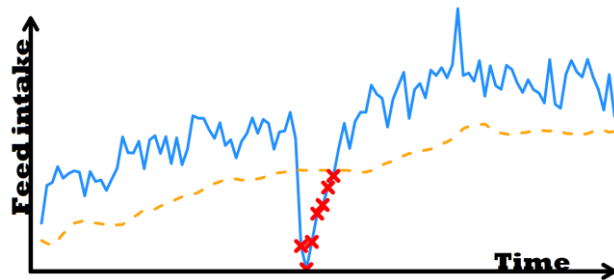
Software tool interface showing greenhouse climate monitored parameters

- Vegetables Trial has 29 deployment sites around Europe
- Full-controlled farming is operating under regulated conditions
- New crops introduced for weeding machines testing





# IoT SOLUTIONS FOR MEAT



Alerts when the feed intake has dropped under the threshold

- Managed to optimize production, transport & processing of poultry meat
- IK4-TEKNIKER has launched novel transport sensor
- Meat Trial has more than 20 deployment sites

# **IoF2020 DEPLOYMENT SITES OVERVIEW**

## 5 TRIALS - 33 USE CASES



## FRUITS



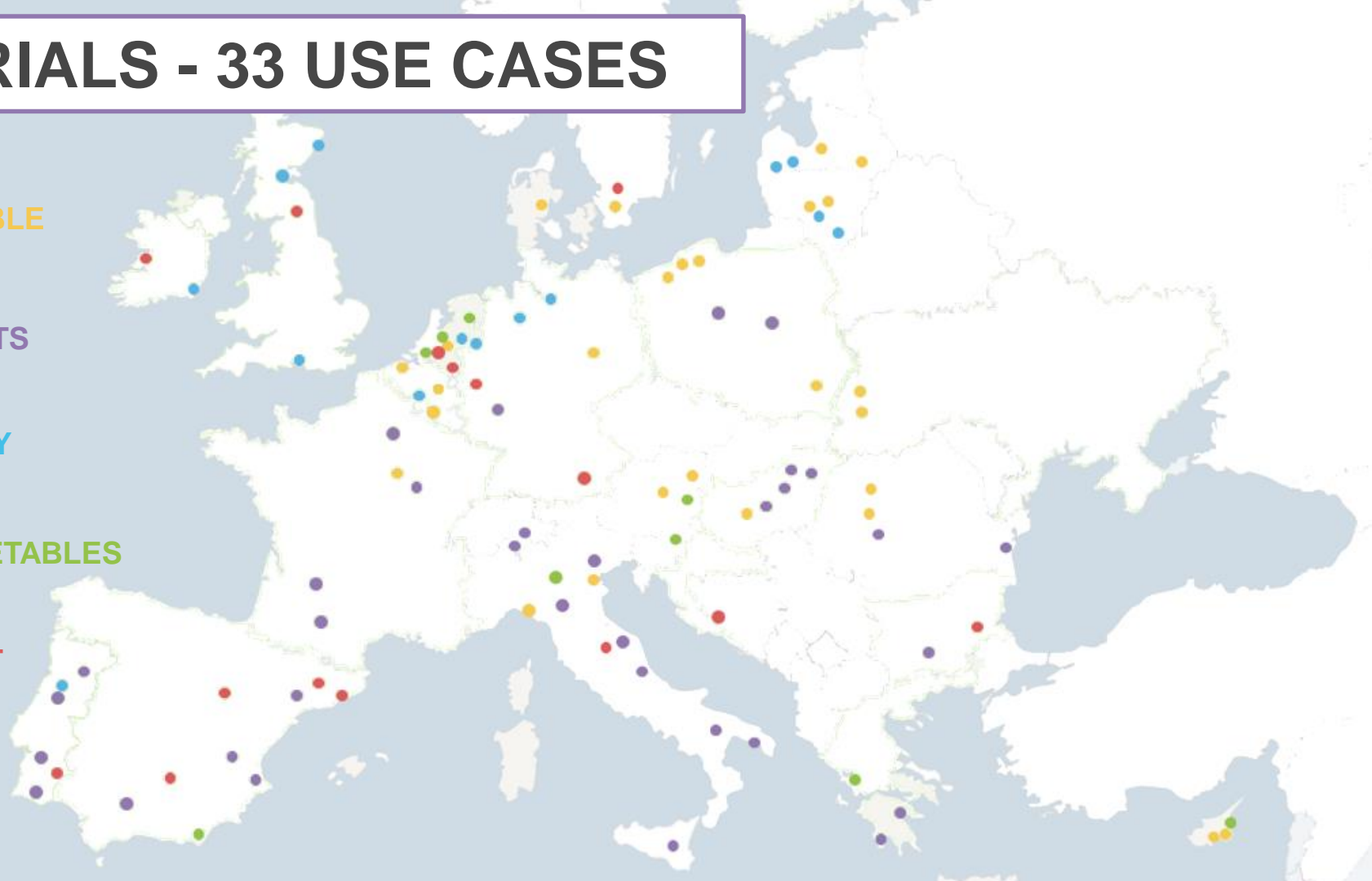
## DAIRY



## VEGETABLES



## MEAT



# **BREAKS AND ACCELERATORS FOR DEVELOPMENT**



## ACCELERATORS

- Increased awareness for food safety & transparency
- Ease of use and affordability, value-for-money, ROI, novel business models
- Vertical and horizontal integration across value chains, fear-of-missing-out
- Traction with investors

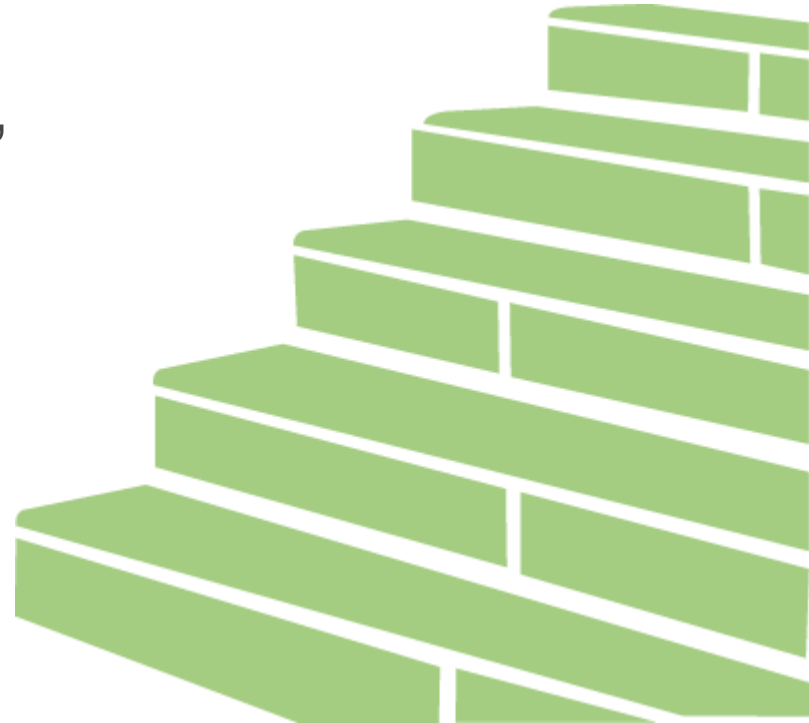


## BREAKS

- Interoperability challenges
- Perceived security and privacy risks
- Data ownership issues
- Barriers on global trade of agri-food products
- Rural wireless and broadband coverage

# NEXT STEPS

- Exploitation & monetization,
- Actively engaging with end-users,
- Scaling up,
- Global expansion.





# THANK YOU

Any questions?

Grigoris Chatzikostas  
[chatzikostas@biosense.rs](mailto:chatzikostas@biosense.rs)

